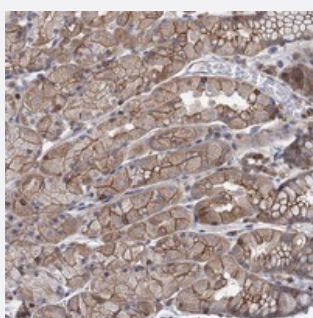


LRCH4 polyclonal antibody

Catalog # PAB23147 Size 100 uL

Applications



Immunohistochemistry (Formalin/PFA-fixed paraffin-embedded sections)

Immunohistochemical staining of human stomach with LRCH4 polyclonal antibody (Cat # PAB23147) shows moderate cytoplasmic and membranous positivity in glandular cells.

Specification

Product Description	Rabbit polyclonal antibody raised against recombinant LRCH4.
Immunogen	Recombinant protein corresponding to amino acids of human LRCH4.
Sequence	LPIAGPATAPAPRPLGSIQRPNSFLFRSSSQSGSGPSSPDSVLRPRRYPQVPDEKDLMTQLRQVL ESRLQ
Host	Rabbit
Reactivity	Human
Form	Liquid
Purification	Antigen affinity purification
Isotype	IgG
Recommend Usage	Immunohistochemistry (1:20-1:50) The optimal working dilution should be determined by the end user.
Storage Buffer	In PBS, pH 7.2 (40% glycerol, 0.02% sodium azide)

Storage Instruction

Store at 4°C. For long term storage store at -20°C.
Aliquot to avoid repeated freezing and thawing.

Note

This product contains sodium azide: a POISONOUS AND HAZARDOUS SUBSTANCE which should be handled by trained staff only.

Applications

- Immunohistochemistry (Formalin/PFA-fixed paraffin-embedded sections)

Immunohistochemical staining of human stomach with LRCH4 polyclonal antibody (Cat # PAB23147) shows moderate cytoplasmic and membranous positivity in glandular cells.

Gene Info — LRCH4

Entrez GeneID[4034](#)**Protein Accession#**[O75427](#)**Gene Name**

LRCH4

Gene Alias

FLJ40101, FLJ46315, LRN, LRRN1, LRRN4, PP14183, SAP25

Gene Description

leucine-rich repeats and calponin homology (CH) domain containing 4

Gene Ontology[Hyperlink](#)**Gene Summary**

This gene encodes a protein that contains leucine-rich repeats (LRR) at its amino terminus and that is known to be involved in ligand binding. The carboxyl terminus may act as a membrane anchor. Identified structural elements suggest that the encoded protein resembles a receptor. [provided by RefSeq]

Other Designations

leucine rich repeat neuronal 4|leucine-rich neuronal protein|sin3-associated polypeptide, 25kDa