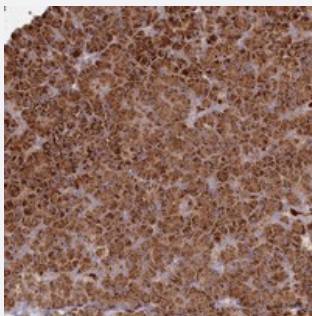


BPIFC polyclonal antibody

Catalog # PAB23146

Size 100 uL

Applications



Immunohistochemistry (Formalin/PFA-fixed paraffin-embedded sections)

Immunohistochemical staining of human pancreas with BPIFC polyclonal antibody (Cat # PAB23146) shows strong cytoplasmic positivity in exocrine glandular cells.

Specification

Product Description	Rabbit polyclonal antibody raised against recombinant BPIFC.
Immunogen	Recombinant protein corresponding to amino acids of human BPIFC.
Sequence	NVLSRIAEMYLSQPFMVRIMATEPPIINLQPGNFTLDIPASIMMLTQPKNSTVETVSMDFVASTSVGL VILGQRLVCSLSLNRFR
Host	Rabbit
Reactivity	Human
Form	Liquid
Purification	Antigen affinity purification
Isotype	IgG
Recommend Usage	Immunohistochemistry (1:20-1:50) The optimal working dilution should be determined by the end user.
Storage Buffer	In PBS, pH 7.2 (40% glycerol, 0.02% sodium azide)

Storage Instruction

Store at 4°C. For long term storage store at -20°C.
Aliquot to avoid repeated freezing and thawing.

Note

This product contains sodium azide: a POISONOUS AND HAZARDOUS SUBSTANCE which should be handled by trained staff only.

Applications

- Immunohistochemistry (Formalin/PFA-fixed paraffin-embedded sections)

Immunohistochemical staining of human pancreas with BPIFC polyclonal antibody (Cat # PAB23146) shows strong cytoplasmic positivity in exocrine glandular cells.

Gene Info — BPIFC

Entrez GeneID[254240](#)**Protein Accession#**[Q8NFQ6](#)**Gene Name**

BPIFC

Gene Alias

RP1-149A16.10-011, BPIL2

Gene Description

BPI fold containing family C

Gene Ontology[Hyperlink](#)**Other Designations**

BPI fold-containing family C protein; BPI-like 2; bactericidal/permeability-increasing protein-like 2