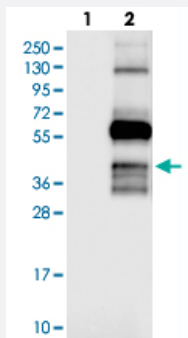


C10orf26 polyclonal antibody

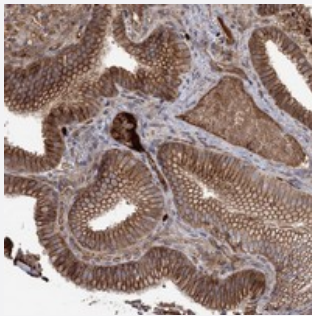
Catalog # PAB23141 Size 100 uL

Applications



Western Blot (Transfected lysate)

Western blot analysis of Lane 1: Negative control (vector only transfected HEK293T lysate), Lane 2: Over-expression Lysate (Co-expressed with a C-terminal myc-DDK tag (~3.1 kDa) in mammalian HEK293T cells) with C10orf26 polyclonal antibody (Cat # PAB23141).



Immunohistochemistry (Formalin/PFA-fixed paraffin-embedded sections)

Immunohistochemical staining of human gallbladder with C10orf26 polyclonal antibody (Cat # PAB23141) shows strong cytoplasmic and membranous positivity in glandular cells.

Specification

Product Description	Rabbit polyclonal antibody raised against recombinant C10orf26.
Immunogen	Recombinant protein corresponding to amino acids of human C10orf26.
Sequence	PLSEPSRSSTRPPSIADPDPSDLPVDRAATKAPGMEPSGSVAGLGELDPGAFLDKDAECREELL KDDSSHEGAPDSKEKTPGRHRRFTGD
Host	Rabbit
Reactivity	Human
Form	Liquid

Purification	Antigen affinity purification
Isotype	IgG
Recommend Usage	Immunohistochemistry (1:50-1:200) Western Blot (1:250-1:500) The optimal working dilution should be determined by the end user.
Storage Buffer	In PBS, pH 7.2 (40% glycerol, 0.02% sodium azide)
Storage Instruction	Store at 4°C. For long term storage store at -20°C. Aliquot to avoid repeated freezing and thawing.
Note	This product contains sodium azide: a POISONOUS AND HAZARDOUS SUBSTANCE which should be handled by trained staff only.

Applications

- Western Blot (Transfected lysate)

Western blot analysis of Lane 1: Negative control (vector only transfected HEK293T lysate), Lane 2: Over-expression Lysate (Co-expressed with a C-terminal myc-DDK tag (~3.1 kDa) in mammalian HEK293T cells) with C10orf26 polyclonal antibody (Cat # PAB23141).

- Immunohistochemistry (Formalin/PFA-fixed paraffin-embedded sections)

Immunohistochemical staining of human gallbladder with C10orf26 polyclonal antibody (Cat # PAB23141) shows strong cytoplasmic and membranous positivity in glandular cells.

Gene Info — C10orf26

Entrez GeneID	54838
Protein Accession#	Q9NX94
Gene Name	C10orf26
Gene Alias	FLJ20154, FLJ20367, MGC125648, OPAL1
Gene Description	chromosome 10 open reading frame 26
Omim ID	611129
Gene Ontology	Hyperlink
Other Designations	OTTHUMP00000020381 hypothetical protein LOC54838 outcome predictor in acute leukemia 1

Disease

- [Alzheimer Disease](#)
- [Genetic Predisposition to Disease](#)