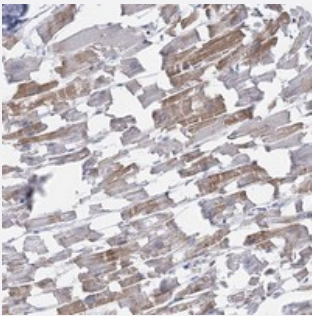


C11orf21 polyclonal antibody

Catalog # PAB23140 Size 100 uL

Applications



Immunohistochemistry (Formalin/PFA-fixed paraffin-embedded sections)

Immunohistochemical staining of human heart muscle with C11orf21 polyclonal antibody (Cat # PAB23140) shows moderate cytoplasmic positivity in myocytes at 1:500-1:1000 dilution.

Specification

Product Description	Rabbit polyclonal antibody raised against recombinant C11orf21.
Immunogen	Recombinant protein corresponding to amino acids of human C11orf21.
Sequence	PHLSSQSGVEPPDRWTGTPGWPSRDQEAPGSMMPAAAAQPSAHGALVPPATAHEPVDHPAL HWLACCCCLSLPGQLPLAI
Host	Rabbit
Reactivity	Human
Form	Liquid
Purification	Antigen affinity purification
Isotype	IgG
Recommend Usage	Immunohistochemistry (1:500-1:1000) The optimal working dilution should be determined by the end user.
Storage Buffer	In PBS, pH 7.2 (40% glycerol, 0.02% sodium azide)

Storage Instruction

Store at 4°C. For long term storage store at -20°C.
Aliquot to avoid repeated freezing and thawing.

Note

This product contains sodium azide: a POISONOUS AND HAZARDOUS SUBSTANCE which should be handled by trained staff only.

Applications

- Immunohistochemistry (Formalin/PFA-fixed paraffin-embedded sections)

Immunohistochemical staining of human heart muscle with C11orf21 polyclonal antibody (Cat # PAB23140) shows moderate cytoplasmic positivity in myocytes at 1:500-1:1000 dilution.

Gene Info — C11orf21

Entrez GeneID[29125](#)**Protein Accession#**[Q9P2W6](#)**Gene Name**

C11orf21

Gene Alias

-

Gene Description

chromosome 11 open reading frame 21

Omim ID[611033](#)**Gene Ontology**[Hyperlink](#)**Other Designations**

hypothetical protein LOC29125