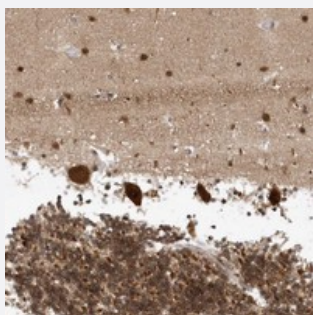


FAM168A polyclonal antibody

Catalog # PAB23136 Size 100 uL

Applications



Immunohistochemistry (Formalin/PFA-fixed paraffin-embedded sections)

Immunohistochemical staining of human cerebellum with FAM168A polyclonal antibody (Cat # PAB23136) shows strong cytoplasmic and nuclear positivity in Purkinje cells.

Specification

Product Description	Rabbit polyclonal antibody raised against recombinant FAM168A.
Immunogen	Recombinant protein corresponding to amino acids of human FAM168A.
Sequence	MNPVYSPVQPGAPYGNPKNMAYTGYP TAYPAAAPAYNPSLYPTNSPSYAPEFQFLHSAYATLLMK QAWPQNSSSCGTEGTFHLPVDTGTENRTY
Host	Rabbit
Reactivity	Human
Form	Liquid
Purification	Antigen affinity purification
Isotype	IgG
Recommend Usage	The optimal working dilution should be determined by the end user.
Storage Buffer	In PBS, pH 7.2 (40% glycerol, 0.02% sodium azide)
Storage Instruction	Store at 4°C. For long term storage store at -20°C. Aliquot to avoid repeated freezing and thawing.

Note

This product contains sodium azide: a POISONOUS AND HAZARDOUS SUBSTANCE which should be handled by trained staff only.

Applications

- Immunohistochemistry (Formalin/PFA-fixed paraffin-embedded sections)

Immunohistochemical staining of human cerebellum with FAM168A polyclonal antibody (Cat # PAB23136) shows strong cytoplasmic and nuclear positivity in purkinje cells.

Gene Info — FAM168A

Entrez GeneID	23201
Protein Accession#	Q92567
Gene Name	FAM168A
Gene Alias	KIAA0280, TCRP1
Gene Description	family with sequence similarity 168, member A
Gene Ontology	Hyperlink
Gene Summary	O
Other Designations	hypothetical protein LOC23201 tongue cancer chemotherapy resistance-associated protein 1