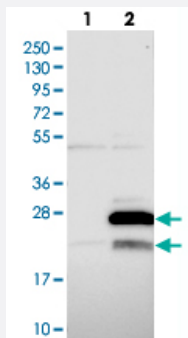


# MRPL47 polyclonal antibody

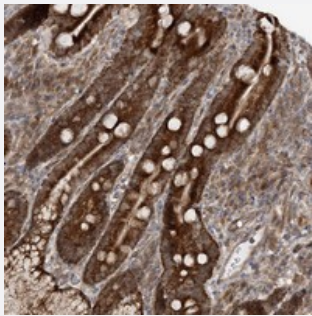
Catalog # PAB23132      Size 100 uL

## Applications



### Western Blot (Transfected lysate)

Western blot analysis of Lane 1: Negative control (vector only transfected HEK293T lysate), Lane 2: Over-expression Lysate (Co-expressed with a C-terminal myc-DDK tag (~3.1 kDa) in mammalian HEK293T cells) with MRPL47 polyclonal antibody (Cat # PAB23132).



### Immunohistochemistry (Formalin/PFA-fixed paraffin-embedded sections)

Immunohistochemical staining of human duodenum with MRPL47 polyclonal antibody (Cat # PAB23132) shows strong cytoplasmic positivity in glandular cells.

## Specification

<b>Product Description</b>	Rabbit polyclonal antibody raised against recombinant MRPL47.
<b>Immunogen</b>	Recombinant protein corresponding to amino acids of human MRPL47.
<b>Sequence</b>	LKERNMLLTLEQEAKRQLPMPSPERLDKVVDSMDALDKVVQEREDALRLLQTGQERARPGAW RRDIFGRIWHKFKQWVI
<b>Host</b>	Rabbit
<b>Reactivity</b>	Human
<b>Form</b>	Liquid

<b>Purification</b>	Antigen affinity purification
<b>Isotype</b>	IgG
<b>Recommend Usage</b>	Immunohistochemistry (1:1000-1:2500) Western Blot (1:250-1:500) The optimal working dilution should be determined by the end user.
<b>Storage Buffer</b>	In PBS, pH 7.2 (40% glycerol, 0.02% sodium azide)
<b>Storage Instruction</b>	Store at 4°C. For long term storage store at -20°C. Aliquot to avoid repeated freezing and thawing.
<b>Note</b>	This product contains sodium azide: a POISONOUS AND HAZARDOUS SUBSTANCE which should be handled by trained staff only.

## Applications

- Western Blot (Transfected lysate)

Western blot analysis of Lane 1: Negative control (vector only transfected HEK293T lysate), Lane 2: Over-expression Lysate (Co-expressed with a C-terminal myc-DDK tag (~3.1 kDa) in mammalian HEK293T cells) with MRPL47 polyclonal antibody (Cat # PAB23132).

- Immunohistochemistry (Formalin/PFA-fixed paraffin-embedded sections)

Immunohistochemical staining of human duodenum with MRPL47 polyclonal antibody (Cat # PAB23132) shows strong cytoplasmic positivity in glandular cells.

## Gene Info — MRPL47

<b>Entrez GeneID</b>	<a href="#">57129</a>
<b>Protein Accession#</b>	<a href="#">Q9HD33</a>
<b>Gene Name</b>	MRPL47
<b>Gene Alias</b>	CGI-204, MGC45403, NCM1
<b>Gene Description</b>	mitochondrial ribosomal protein L47
<b>Gene Ontology</b>	<a href="#">Hyperlink</a>

**Gene Summary**

Mammalian mitochondrial ribosomal proteins are encoded by nuclear genes and help in protein synthesis within the mitochondrion. Mitochondrial ribosomes (mitoribosomes) consist of a small 28S subunit and a large 39S subunit. They have an estimated 75% protein to rRNA composition compared to prokaryotic ribosomes, where this ratio is reversed. Another difference between mammalian mitoribosomes and prokaryotic ribosomes is that the latter contain a 5S rRNA. Among different species, the proteins comprising the mitoribosome differ greatly in sequence, and sometimes in biochemical properties, which prevents easy recognition by sequence homology. This gene encodes a 39S subunit protein. This gene is immediately adjacent to the gene for BAF complex 53 kDa subunit protein a (BAF53a), in a tail-to-tail orientation. Two transcript variants encoding different protein isoforms have been identified. [provided by RefSeq]

**Other Designations**

nasopharyngeal carcinoma metastasis-related 1