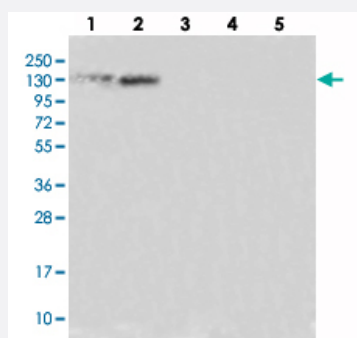


# SR140 polyclonal antibody

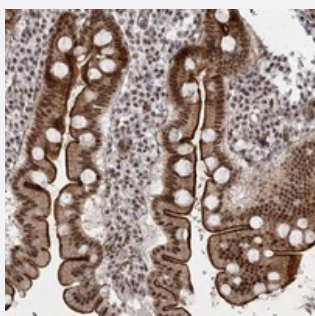
Catalog # PAB23130 Size 100 uL

## Applications



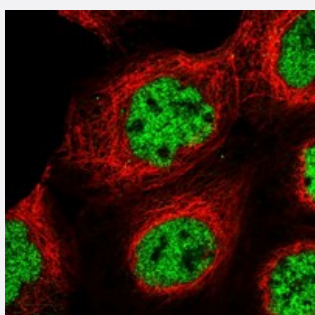
### Western Blot

Western blot analysis of Lane 1: RT-4, Lane 2: U-251 MG, Lane 3: Human Plasma, Lane 4: Liver, Lane 5: Tonsil with SR140 polyclonal antibody (Cat # PAB23130) at 1:250-1:500 dilution.



### Immunohistochemistry (Formalin/PFA-fixed paraffin-embedded sections)

Immunohistochemical staining of human duodenum with SR140 polyclonal antibody (Cat # PAB23130) shows strong nuclear, cytoplasmic and nuclear positivity in glandular cells at 1:50-1:200 dilution.



### Immunofluorescence

Immunofluorescent staining of human cell line A-431 with SR140 polyclonal antibody (Cat # PAB23130) at 1-4 ug/mL dilution shows positivity in nucleus but not nucleoli.

## Specification

### Product Description

Rabbit polyclonal antibody raised against recombinant SR140.

### Immunogen

Recombinant protein corresponding to amino acids of human SR140.

Sequence	EEELDGAPLEDVDGIPIDATPIDDLDGVPIKSLDDDLDDGVPLDATEDSKKNEPIFKVAPSKWEAVD ESELEAQAVTTTSKWEL
Host	Rabbit
Reactivity	Human, Mouse, Rat
Form	Liquid
Purification	Antigen affinity purification
Isotype	IgG
Recommend Usage	Immunohistochemistry (1:50-1:200) Western Blot (1:250-1:500) Immunofluorescence (1-4 ug/mL) The optimal working dilution should be determined by the end user.
Storage Buffer	In PBS, pH 7.2 (40% glycerol, 0.02% sodium azide)
Storage Instruction	Store at 4°C. For long term storage store at -20°C. Aliquot to avoid repeated freezing and thawing.
Note	This product contains sodium azide: a POISONOUS AND HAZARDOUS SUBSTANCE which should be handled by trained staff only.

## Applications

- Western Blot

Western blot analysis of Lane 1: RT-4, Lane 2: U-251 MG, Lane 3: Human Plasma, Lane 4: Liver, Lane 5: Tonsil with SR140 polyclonal antibody (Cat # PAB23130) at 1:250-1:500 dilution.

- Immunohistochemistry (Formalin/PFA-fixed paraffin-embedded sections)

Immunohistochemical staining of human duodenum with SR140 polyclonal antibody (Cat # PAB23130) shows strong nuclear, cytoplasmic and nuclear positivity in glandular cells at 1:50-1:200 dilution.

- Immunofluorescence

Immunofluorescent staining of human cell line A-431 with SR140 polyclonal antibody (Cat # PAB23130) at 1-4 ug/mL dilution shows positivity in nucleus but not nucleoli.

## Gene Info — SR140

Entrez GeneID [23350](#)

Protein Accession# [O15042](#)

Gene Name	SR140
Gene Alias	KIAA0332, MGC133197
Gene Description	U2-associated SR140 protein
Gene Ontology	<a href="#">Hyperlink</a>
Gene Summary	140 kDa
Other Designations	Ser/Arg-rich domain protein, 140 kDa