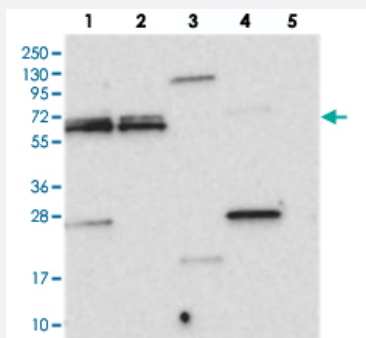


SPAG16 polyclonal antibody

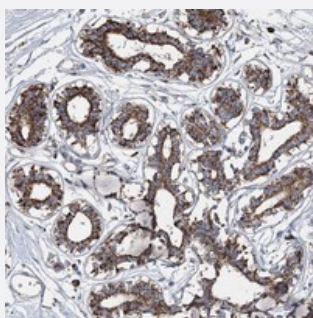
Catalog # PAB23127 Size 100 uL

Applications



Western Blot

Western blot analysis of Lane 1: RT-4, Lane 2: U-251 MG, Lane 3: Human Plasma, Lane 4: Liver, Lane 5: Tonsil with SPAG16 polyclonal antibody (Cat # PAB23127) at 1:250-1:500 dilution.



Immunohistochemistry (Formalin/PFA-fixed paraffin-embedded sections)

Immunohistochemical staining of human breast with SPAG16 polyclonal antibody (Cat # PAB23127) shows strong cytoplasmic positivity in glandular cells at 1:200-1:500 dilution.

Specification

Product Description	Rabbit polyclonal antibody raised against recombinant SPAG16.
Immunogen	Recombinant protein corresponding to amino acids of human SPAG16.
Sequence	NLKKDLKHYKQAADKAREDLLKIQKERDFHRMHHKRVQEKKNKLINDLKGLKLHYASYEPTIRVLHE KHHTLLKEKMLTSLERDKVVG
Host	Rabbit
Reactivity	Human, Mouse, Rat
Form	Liquid

Purification	Antigen affinity purification
Isotype	IgG
Recommend Usage	Immunohistochemistry (1:200-1:500) Western Blot (1:250-1:500) The optimal working dilution should be determined by the end user.
Storage Buffer	In PBS, pH 7.2 (40% glycerol, 0.02% sodium azide)
Storage Instruction	Store at 4°C. For long term storage store at -20°C. Aliquot to avoid repeated freezing and thawing.
Note	This product contains sodium azide: a POISONOUS AND HAZARDOUS SUBSTANCE which should be handled by trained staff only.

Applications

- Western Blot

Western blot analysis of Lane 1: RT-4, Lane 2: U-251 MG, Lane 3: Human Plasma, Lane 4: Liver, Lane 5: Tonsil with SPAG16 polyclonal antibody (Cat # PAB23127) at 1:250-1:500 dilution.

- Immunohistochemistry (Formalin/PFA-fixed paraffin-embedded sections)

Immunohistochemical staining of human breast with SPAG16 polyclonal antibody (Cat # PAB23127) shows strong cytoplasmic positivity in glandular cells at 1:200-1:500 dilution.

Gene Info — SPAG16

Entrez GeneID	79582
Protein Accession#	Q8N0X2
Gene Name	SPAG16
Gene Alias	DKFZp666P1710, FLJ22724, FLJ37717, MGC87036, PF20, WDR29
Gene Description	sperm associated antigen 16
Gene Ontology	Hyperlink
Gene Summary	Cilia and flagella are comprised of a microtubular backbone, the axoneme, which is organized by the basal body and surrounded by plasma membrane. SPAG16 encodes 2 major proteins that associate with the axoneme of sperm tail and the nucleus of postmeiotic germ cells, respectively (Zhang et al., 2007 [PubMed 17699735]).[supplied by OMIM]
Other Designations	WD repeat domain 29 sperm-associated WD repeat protein

Disease

- [Genetic Predisposition to Disease](#)
- [Pulmonary Disease](#)
- [Tobacco Use Disorder](#)