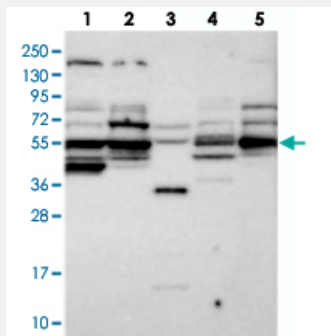


# C5orf37 polyclonal antibody

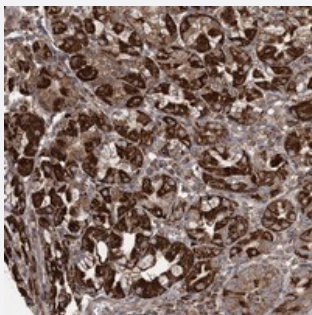
Catalog # PAB23124      Size 100 uL

## Applications



### Western Blot

Western blot analysis of Lane 1: RT-4, Lane 2: U-251 MG, Lane 3: Human Plasma, Lane 4: Liver, Lane 5: Tonsil with C5orf37 polyclonal antibody (Cat # PAB23124).



### Immunohistochemistry (Formalin/PFA-fixed paraffin-embedded sections)

Immunohistochemical staining of human stomach with C5orf37 polyclonal antibody (Cat # PAB23124) shows strong nuclear positivity in squamous epithelial cells.

## Specification

<b>Product Description</b>	Rabbit polyclonal antibody raised against recombinant C5orf37.
<b>Immunogen</b>	Recombinant protein corresponding to amino acids of human C5orf37.
<b>Sequence</b>	DVVERACQARAEVVCIQISNDYEAKVAMLSGALENAKAEIQRMQHEKEHFEDSMKKAFMRGVCA LNLEAMTIFQNRNDAGIDSTNNKKEEYGPVGQ
<b>Host</b>	Rabbit
<b>Reactivity</b>	Human
<b>Form</b>	Liquid

Purification	Antigen affinity purification
Isotype	IgG
Recommend Usage	Immunohistochemistry (1:200-1:500) Western Blot (1:250-1:500) The optimal working dilution should be determined by the end user.
Storage Buffer	In PBS, pH 7.2 (40% glycerol, 0.02% sodium azide)
Storage Instruction	Store at 4°C. For long term storage store at -20°C. Aliquot to avoid repeated freezing and thawing.
Note	This product contains sodium azide: a POISONOUS AND HAZARDOUS SUBSTANCE which should be handled by trained staff only.

## Applications

- Western Blot

Western blot analysis of Lane 1: RT-4, Lane 2: U-251 MG, Lane 3: Human Plasma, Lane 4: Liver, Lane 5: Tonsil with C5orf37 polyclonal antibody (Cat # PAB23124).

- Immunohistochemistry (Formalin/PFA-fixed paraffin-embedded sections)

Immunohistochemical staining of human stomach with C5orf37 polyclonal antibody (Cat # PAB23124) shows strong nuclear positivity in squamous epithelial cells.

## Gene Info — C5orf37

Entrez GeneID	<a href="#">134359</a>
Protein Accession#	<a href="#">Q8NA72</a>
Gene Name	C5orf37
Gene Alias	FLJ35779, MGC120442, MGC120443, MGC120444
Gene Description	chromosome 5 open reading frame 37
Gene Ontology	<a href="#">Hyperlink</a>
Other Designations	hypothetical protein LOC134359