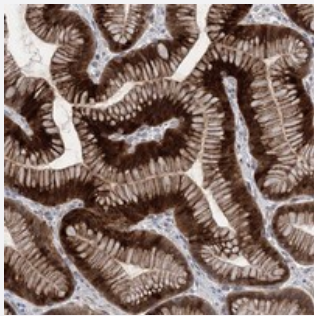


# METTL24 polyclonal antibody

Catalog # PAB23111      Size 100 uL

## Applications



### Immunohistochemistry (Formalin/PFA-fixed paraffin-embedded sections)

Immunohistochemical staining of human stomach with METTL24 polyclonal antibody (Cat # PAB23111) shows strong cytoplasmic and membranous positivity in glandular cells at 1:50-1:200 dilution.

## Specification

Product Description	Rabbit polyclonal antibody raised against recombinant METTL24.
Immunogen	Recombinant protein corresponding to amino acids of human METTL24.
Sequence	AQSLDEEAWRFLRYISTTQIACNHMNTDSLATDSSPTHKPWSVCLDDRFNLAHQIRNKQCRLYS GLGSDDTHFEVSMANNCEV
Host	Rabbit
Reactivity	Human
Form	Liquid
Purification	Antigen affinity purification
Isotype	IgG
Recommend Usage	Immunohistochemistry (1:50-1:200) The optimal working dilution should be determined by the end user.
Storage Buffer	In PBS, pH 7.2 (40% glycerol, 0.02% sodium azide)

**Storage Instruction**

Store at 4°C. For long term storage store at -20°C.  
Aliquot to avoid repeated freezing and thawing.

**Note**

This product contains sodium azide: a POISONOUS AND HAZARDOUS SUBSTANCE which should be handled by trained staff only.

## Applications

- Immunohistochemistry (Formalin/PFA-fixed paraffin-embedded sections)

Immunohistochemical staining of human stomach with METTL24 polyclonal antibody (Cat # PAB23111) shows strong cytoplasmic and membranous positivity in glandular cells at 1:50-1:200 dilution.

## Gene Info — METTL24

**Entrez GeneID**[728464](#)**Protein Accession#**[Q5JXM2](#)**Gene Name**

METTL24

**Gene Alias**

RP1-71D21.2, C6orf186, dJ71D21.2

**Gene Description**

methyltransferase like 24

**Gene Ontology**[Hyperlink](#)**Other Designations**

UPF0624 protein C6orf186; methyltransferase-like protein 24