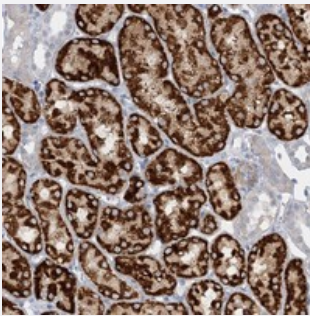


AGXT2 polyclonal antibody

Catalog # PAB23103 Size 100 uL

Applications



Immunohistochemistry (Formalin/PFA-fixed paraffin-embedded sections)

Immunohistochemical staining of human kidney with AGXT2 polyclonal antibody (Cat # PAB23103) shows strong cytoplasmic positivity in renal tubules at 1:50-1:200 dilution.

Specification

| | |
|----------------------------|---|
| Product Description | Rabbit polyclonal antibody raised against recombinant AGXT2. |
| Immunogen | Recombinant protein corresponding to amino acids of human AGXT2. |
| Sequence | DVRGKGLMIGIEMVQDKISCRPLPREEVNQIHEDCKHMGLLVGRGSIFSQTFRIAPSMCITKPEVDF AVEVFRSALTQHMERRAK |
| Host | Rabbit |
| Reactivity | Human |
| Form | Liquid |
| Purification | Antigen affinity purification |
| Isotype | IgG |
| Recommend Usage | Immunohistochemistry (1:50-1:200) The optimal working dilution should be determined by the end user. |
| Storage Buffer | In PBS, pH 7.2 (40% glycerol, 0.02% sodium azide) |

Storage Instruction

Store at 4°C. For long term storage store at -20°C.
Aliquot to avoid repeated freezing and thawing.

Note

This product contains sodium azide: a POISONOUS AND HAZARDOUS SUBSTANCE which should be handled by trained staff only.

Applications

- Immunohistochemistry (Formalin/PFA-fixed paraffin-embedded sections)

Immunohistochemical staining of human kidney with AGXT2 polyclonal antibody (Cat # PAB23103) shows strong cytoplasmic positivity in renal tubules at 1:50-1:200 dilution.

Gene Info — AGXT2

Entrez GeneID[64902](#)**Protein Accession#**[Q9BYV1](#)**Gene Name**

AGXT2

Gene Alias

AGT2

Gene Description

alanine-glyoxylate aminotransferase 2

Gene Ontology[Hyperlink](#)**Gene Summary**

The protein encoded by this gene is a class III pyridoxal-phosphate-dependent mitochondrial aminotransferase. It catalyzes the conversion of glyoxylate to glycine using L-alanine as the amino donor. [provided by RefSeq]

Other Designations

beta-ALAAT III|beta-alanine-pyruvate aminotransferase

Pathway

- [Alanine](#)