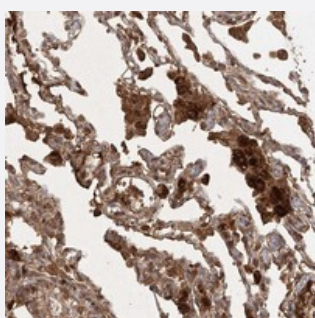


# ARL13A polyclonal antibody

Catalog # PAB23102      Size 100 uL

## Applications



### Immunohistochemistry (Formalin/PFA-fixed paraffin-embedded sections)

Immunohistochemical staining of human lung with ARL13A polyclonal antibody (Cat # PAB23102) shows strong cytoplasmic positivity in macrophages at 1:20-1:50 dilution.

## Specification

Product Description	Rabbit polyclonal antibody raised against recombinant ARL13A.
Immunogen	Recombinant protein corresponding to amino acids of human ARL13A.
Sequence	EETRRNVTIPIIGLNNSGKTVLVEAFQKLLPSKTDHCMKSELTLLLLDEYELSYDLNGDLKGREAW PNYYAQAHGLVFLDS
Host	Rabbit
Reactivity	Human
Form	Liquid
Purification	Antigen affinity purification
Isotype	IgG
Recommend Usage	Immunohistochemistry (1:20-1:50) The optimal working dilution should be determined by the end user.
Storage Buffer	In PBS, pH 7.2 (40% glycerol, 0.02% sodium azide)

**Storage Instruction**

Store at 4°C. For long term storage store at -20°C.  
Aliquot to avoid repeated freezing and thawing.

**Note**

This product contains sodium azide: a POISONOUS AND HAZARDOUS SUBSTANCE which should be handled by trained staff only.

## Applications

- Immunohistochemistry (Formalin/PFA-fixed paraffin-embedded sections)

Immunohistochemical staining of human lung with ARL13A polyclonal antibody (Cat # PAB23102) shows strong cytoplasmic positivity in macrophages at 1:20-1:50 dilution.

## Gene Info — ARL13A

**Entrez GeneID**[392509](#)**Protein Accession#**[Q5H913](#)**Gene Name**

ARL13A

**Gene Alias**

ARL13, dJ341D10.2

**Gene Description**

ADP-ribosylation factor-like 13A

**Gene Ontology**[Hyperlink](#)**Other Designations**

ADP-ribosylation factor-like 13