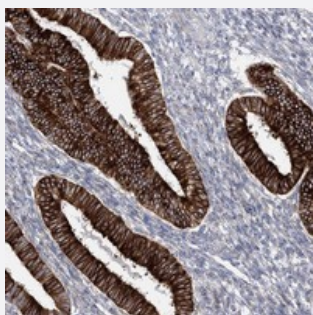


YTHDC2 polyclonal antibody

Catalog # PAB23100 Size 100 uL

Applications



Immunohistochemistry (Formalin/PFA-fixed paraffin-embedded sections)

Immunohistochemical staining of human corpus, uterine with YTHDC2 polyclonal antibody (Cat # PAB23100) shows strong cytoplasmic positivity in glandular cells.

Specification

Product Description	Rabbit polyclonal antibody raised against recombinant YTHDC2.
Immunogen	Recombinant protein corresponding to amino acids of human YTHDC2.
Sequence	APSKPWSQVDEATIRAIIAVLSTEEQSAGLQQPSGIGQRPRPMSSEELPLASSWRSNNSRKSSAD TEFSDECTTAERVLMKSPSPALHP
Host	Rabbit
Reactivity	Human
Form	Liquid
Purification	Antigen affinity purification
Isotype	IgG
Recommend Usage	Immunohistochemistry (1:1000-1:2500) The optimal working dilution should be determined by the end user.
Storage Buffer	In PBS, pH 7.2 (40% glycerol, 0.02% sodium azide)

Storage Instruction

Store at 4°C. For long term storage store at -20°C.
Aliquot to avoid repeated freezing and thawing.

Note

This product contains sodium azide: a POISONOUS AND HAZARDOUS SUBSTANCE which should be handled by trained staff only.

Applications

- Immunohistochemistry (Formalin/PFA-fixed paraffin-embedded sections)

Immunohistochemical staining of human corpus, uterine with YTHDC2 polyclonal antibody (Cat # PAB23100) shows strong cytoplasmic positivity in glandular cells.

Gene Info — YTHDC2

Entrez GeneID[64848](#)**Protein Accession#**[Q9H6S0](#)**Gene Name**

YTHDC2

Gene Alias

-

Gene Description

YTH domain containing 2

Gene Ontology[Hyperlink](#)**Other Designations**

-

Disease

- [Disease Progression](#)
- [Disease Susceptibility](#)
- [HIV Infections](#)