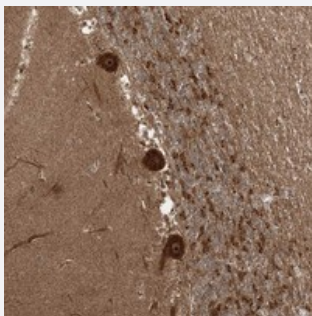


# C10orf113 polyclonal antibody

Catalog # PAB23098

Size 100 uL

## Applications



### Immunohistochemistry (Formalin/PFA-fixed paraffin-embedded sections)

Immunohistochemical staining of human cerebellum with C10orf113 polyclonal antibody (Cat # PAB23098) shows strong cytoplasmic nucleolar positivity in Purkinje cells at 1:50-1:200 dilution.

## Specification

Product Description	Rabbit polyclonal antibody raised against recombinant C10orf113.
Immunogen	Recombinant protein corresponding to amino acids of human C10orf113.
Sequence	LQSWPTLARWLRRVSFSLYKPPIQAAPEPDGNWAKSPRLSLGPEGITKGKHGFKFQGIKEKFNV SKKVLK
Host	Rabbit
Reactivity	Human
Form	Liquid
Purification	Antigen affinity purification
Isotype	IgG
Recommend Usage	Immunohistochemistry (1:50-1:200) The optimal working dilution should be determined by the end user.
Storage Buffer	In PBS, pH 7.2 (40% glycerol, 0.02% sodium azide)

**Storage Instruction**

Store at 4°C. For long term storage store at -20°C.  
Aliquot to avoid repeated freezing and thawing.

**Note**

This product contains sodium azide: a POISONOUS AND HAZARDOUS SUBSTANCE which should be handled by trained staff only.

## Applications

- Immunohistochemistry (Formalin/PFA-fixed paraffin-embedded sections)

Immunohistochemical staining of human cerebellum with C10orf113 polyclonal antibody (Cat # PAB23098) shows strong cytoplasmic nucleolar positivity in Purkinje cells at 1:50-1:200 dilution.

## Gene Info — C10orf113

**Entrez GeneID**[387638](#)**Protein Accession#**[Q5VZT2](#)**Gene Name**

C10orf113

**Gene Alias**

bA165O3.1

**Gene Description**

chromosome 10 open reading frame 113

**Gene Ontology**[Hyperlink](#)**Other Designations**

OTTHUMP00000019267|hypothetical protein LOC387638