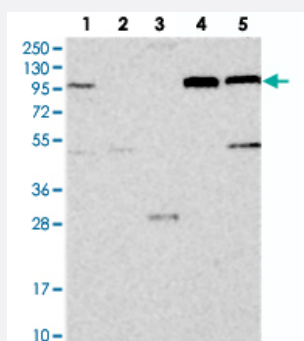


COPB2 polyclonal antibody

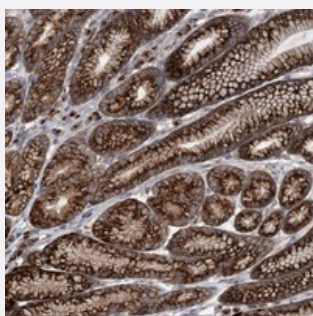
Catalog # PAB23074 Size 100 uL

Applications



Western Blot

Western blot analysis of Lane 1: RT-4, Lane 2: U-251 MG, Lane 3: Human Plasma, Lane 4: Liver, Lane 5: Tonsil with COPB2 polyclonal antibody (Cat # PAB23074).



Immunohistochemistry (Formalin/PFA-fixed paraffin-embedded sections)

Immunohistochemical staining of human stomach with COPB2 polyclonal antibody (Cat # PAB23074) shows strong granular cytoplasmic positivity in glandular cells.

Specification

Product Description	Rabbit polyclonal antibody raised against recombinant COPB2.
Immunogen	Recombinant protein corresponding to amino acids of human COPB2.
Sequence	VALGYDEGSIVKLGREEPAMSDANGKIWAKHSEVQQANLKAMGDAEIKDGERLPLAVKDMGS CEIYPQTIQHNPNGRFVVVCGDGEYIYTA
Host	Rabbit
Reactivity	Human
Form	Liquid

Purification	Antigen affinity purification
Isotype	IgG
Recommend Usage	Immunohistochemistry (1:50-1:200) Western Blot (1:250-1:500) The optimal working dilution should be determined by the end user.
Storage Buffer	In PBS, pH 7.2 (40% glycerol, 0.02% sodium azide)
Storage Instruction	Store at 4°C. For long term storage store at -20°C. Aliquot to avoid repeated freezing and thawing.
Note	This product contains sodium azide: a POISONOUS AND HAZARDOUS SUBSTANCE which should be handled by trained staff only.

Applications

- Western Blot

Western blot analysis of Lane 1: RT-4, Lane 2: U-251 MG, Lane 3: Human Plasma, Lane 4: Liver, Lane 5: Tonsil with COPB2 polyclonal antibody (Cat # PAB23074).

- Immunohistochemistry (Formalin/PFA-fixed paraffin-embedded sections)

Immunohistochemical staining of human stomach with COPB2 polyclonal antibody (Cat # PAB23074) shows strong granular cytoplasmic positivity in glandular cells.

Gene Info — COPB2

Entrez GeneID	9276
Protein Accession#	P35606
Gene Name	COPB2
Gene Alias	beta'-COP
Gene Description	coatamer protein complex, subunit beta 2 (beta prime)
Omim ID	606990
Gene Ontology	Hyperlink
Gene Summary	The Golgi coatamer complex (see MIM 601924) constitutes the coat of nonclathrin-coated vesicle and is essential for Golgi budding and vesicular trafficking. It consists of 7 protein subunits, including COPB2.[supplied by OMIM]

Other Designationsbetaprime-COP|coatomer binding complex, beta prime subunit
