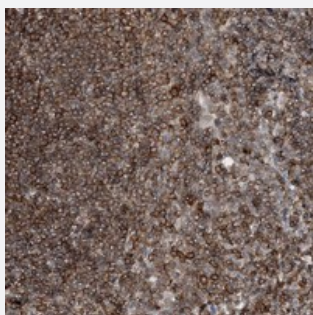


LOC90826 polyclonal antibody

Catalog # PAB23070 Size 100 uL

Applications



Immunohistochemistry (Formalin/PFA-fixed paraffin-embedded sections)

Immunohistochemical staining of human tonsil with LOC90826 polyclonal antibody (Cat # PAB23070) shows strong cytoplasmic positivity in lymphoid cells outside reaction centra at 1:200-1:500 dilution.

Specification

Product Description	Rabbit polyclonal antibody raised against recombinant LOC90826.
Immunogen	Recombinant protein corresponding to amino acids of human LOC90826.
Sequence	HTKSLDIEIPKHIPERVSLVVTETVDAGLFGEGIVESLIHAWEHL LQPKTKGESANCEKYGKVIPAS AVIFGMAVECAEIRRHRVGIKDIAGIHLPT
Host	Rabbit
Reactivity	Human
Form	Liquid
Purification	Antigen affinity purification
Isotype	IgG
Recommend Usage	Immunohistochemistry (1:200-1:500) The optimal working dilution should be determined by the end user.
Storage Buffer	In PBS, pH 7.2 (40% glycerol, 0.02% sodium azide)

Storage Instruction

Store at 4°C. For long term storage store at -20°C.
Aliquot to avoid repeated freezing and thawing.

Note

This product contains sodium azide: a POISONOUS AND HAZARDOUS SUBSTANCE which should be handled by trained staff only.

Applications

- Immunohistochemistry (Formalin/PFA-fixed paraffin-embedded sections)

Immunohistochemical staining of human tonsil with LOC90826 polyclonal antibody (Cat # PAB23070) shows strong cytoplasmic positivity in lymphoid cells outside reaction centra at 1:200-1:500 dilution.

Gene Info — LOC90826

Entrez GeneID[90826](#)**Protein Accession#**[Q6P2P2](#)**Gene Name**

LOC90826

Gene Alias

FLJ46629

Gene Description

hypothetical protein BC004337

Gene Ontology[Hyperlink](#)**Other Designations**

hypothetical protein LOC90826