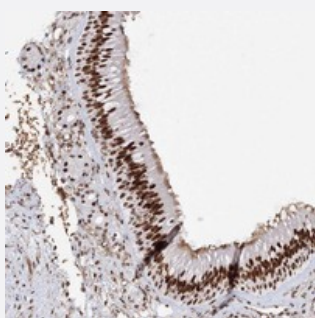


# ZNF638 polyclonal antibody

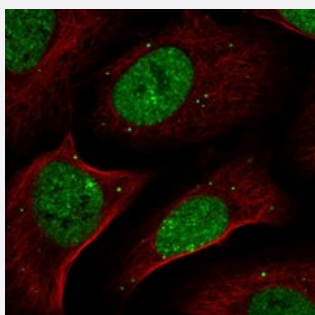
Catalog # PAB23057      Size 100 uL

## Applications



### Immunohistochemistry (Formalin/PFA-fixed paraffin-embedded sections)

Immunohistochemical staining of human nasopharynx with ZNF638 polyclonal antibody (Cat # PAB23057) shows strong nuclear positivity in respiratory epithelial cells.



### Immunofluorescence

Immunofluorescent staining of human cell line U-2 OS with ZNF638 polyclonal antibody (Cat # PAB23057) at 1-4 ug/mL dilution shows positivity in nucleus but not nucleoli and vesicles.

## Specification

Product Description	Rabbit polyclonal antibody raised against recombinant ZNF638.
Immunogen	Recombinant protein corresponding to amino acids of human ZNF638.
Sequence	GLLKPTSARSGLAESSKFKPTQSSLTRGGSGRISALQGKLSKLDYRDITKQSQETEARPSIMKRD DSNNKTLAEQNTKNPK
Host	Rabbit
Reactivity	Human
Form	Liquid

Purification	Antigen affinity purification
Isotype	IgG
Recommend Usage	Immunohistochemistry (1:200-1:500) Immunofluorescence (1-4 ug/mL) The optimal working dilution should be determined by the end user.
Storage Buffer	In PBS, pH 7.2 (40% glycerol, 0.02% sodium azide)
Storage Instruction	Store at 4°C. For long term storage store at -20°C. Aliquot to avoid repeated freezing and thawing.
Note	This product contains sodium azide: a POISONOUS AND HAZARDOUS SUBSTANCE which should be handled by trained staff only.

## Applications

- Immunohistochemistry (Formalin/PFA-fixed paraffin-embedded sections)

Immunohistochemical staining of human nasopharynx with ZNF638 polyclonal antibody (Cat # PAB23057) shows strong nuclear positivity in respiratory epithelial cells.

- Immunofluorescence

Immunofluorescent staining of human cell line U-2 OS with ZNF638 polyclonal antibody (Cat # PAB23057) at 1-4 ug/mL dilution shows positivity in nucleus but not nucleoli and vesicles.

## Gene Info — ZNF638

Entrez GeneID	<a href="#">27332</a>
Protein Accession#	<a href="#">Q14966</a>
Gene Name	ZNF638
Gene Alias	DKFZp686P1231, MGC26130, MGC90196, NP220, ZFML, Zfp638
Gene Description	zinc finger protein 638
Gene Ontology	<a href="#">Hyperlink</a>
Gene Summary	The protein encoded by this gene is a nucleoplasmic protein. It binds cytidine-rich sequences in double-stranded DNA. This protein has three types of domains: MH1, MH2 (repeated three times) and MH3. It is associated with packaging, transferring, or processing transcripts. Multiple alternatively spliced transcript variants have been found for this gene, but the biological validity of some variants has not been determined. [provided by RefSeq]

**Other Designations**

CTCL tumor antigen se33-1|NP220 nuclear protein|zinc finger, matrin-like

---