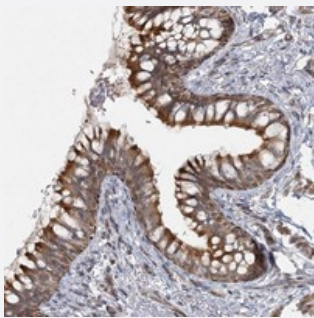


LRP2BP polyclonal antibody

Catalog # PAB23046 Size 100 uL

Applications



Immunohistochemistry (Formalin/PFA-fixed paraffin-embedded sections)

Immunohistochemical staining of human bronchus with LRP2BP polyclonal antibody (Cat # PAB23046) shows moderate cytoplasmic and membranous positivity in respiratory epithelial cells.

Specification

Product Description	Rabbit polyclonal antibody raised against recombinant LRP2BP.
Immunogen	Recombinant protein corresponding to amino acids of human LRP2BP.
Sequence	RILKGDTLAYFLRGQLYFEEGWYEEALEQFEEIKEKDHQATYQLGVMYDGLGTTLDAEKGVDM KKILDSPCPKARHLKFAAAYNLGRAYEGKGVKR
Host	Rabbit
Reactivity	Human
Form	Liquid
Purification	Antigen affinity purification
Isotype	IgG
Recommend Usage	Immunohistochemistry (1:20-1:50) The optimal working dilution should be determined by the end user.
Storage Buffer	In PBS, pH 7.2 (40% glycerol, 0.02% sodium azide)

Storage Instruction

Store at 4°C. For long term storage store at -20°C.
Aliquot to avoid repeated freezing and thawing.

Note

This product contains sodium azide: a POISONOUS AND HAZARDOUS SUBSTANCE which should be handled by trained staff only.

Applications

- Immunohistochemistry (Formalin/PFA-fixed paraffin-embedded sections)

Immunohistochemical staining of human bronchus with LRP2BP polyclonal antibody (Cat # PAB23046) shows moderate cytoplasmic and membranous positivity in respiratory epithelial cells.

Gene Info — LRP2BP

Entrez GeneID[55805](#)**Protein Accession#**[Q9P2M1](#)**Gene Name**

LRP2BP

Gene Alias

DKFZp761O0113, FLJ44965

Gene Description

LRP2 binding protein

Gene Ontology[Hyperlink](#)**Other Designations**

megalin-binding protein