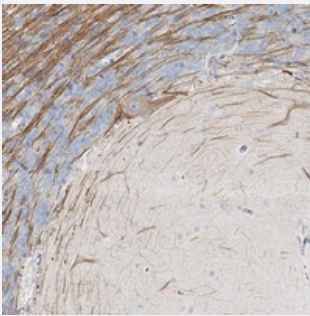


LRP2BP polyclonal antibody

Catalog # PAB23045 Size 100 uL

Applications



Immunohistochemistry (Formalin/PFA-fixed paraffin-embedded sections)

Immunohistochemical staining of human cerebellum with LRP2BP polyclonal antibody (Cat # PAB23045) shows distinct positivity in neuronal filament at 1:10-1:20 dilution.

Specification

Product Description	Rabbit polyclonal antibody raised against recombinant LRP2BP.
Immunogen	Recombinant protein corresponding to amino acids of human LRP2BP.
Sequence	GNLVEYYKMKFFTKCVAFSKRIADYDEVHDIPMIAQVTDCLPEFIGRGMAMASFYHARCLQLGLGI TRDETTAKHYYSKACRLNPALADELHSL
Host	Rabbit
Reactivity	Human
Form	Liquid
Purification	Antigen affinity purification
Isotype	IgG
Recommend Usage	Immunohistochemistry (1:10-1:20) The optimal working dilution should be determined by the end user.
Storage Buffer	In PBS, pH 7.2 (40% glycerol, 0.02% sodium azide)

Storage Instruction

Store at 4°C. For long term storage store at -20°C.
Aliquot to avoid repeated freezing and thawing.

Note

This product contains sodium azide: a POISONOUS AND HAZARDOUS SUBSTANCE which should be handled by trained staff only.

Applications

- Immunohistochemistry (Formalin/PFA-fixed paraffin-embedded sections)

Immunohistochemical staining of human cerebellum with LRP2BP polyclonal antibody (Cat # PAB23045) shows distinct positivity in neuronal filament at 1:10-1:20 dilution.

Gene Info — LRP2BP

Entrez GeneID[55805](#)**Protein Accession#**[Q9P2M1](#)**Gene Name**

LRP2BP

Gene Alias

DKFZp761O0113, FLJ44965

Gene Description

LRP2 binding protein

Gene Ontology[Hyperlink](#)**Other Designations**

megalin-binding protein