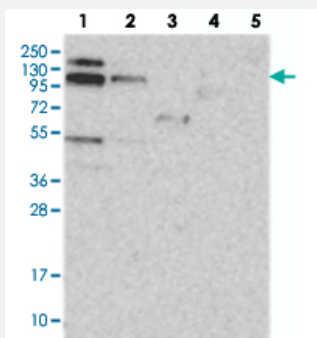


RBM15B polyclonal antibody

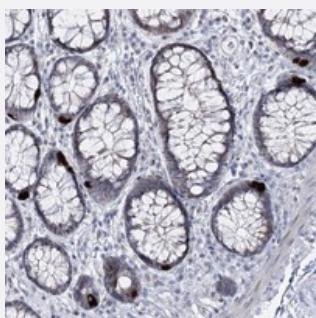
Catalog # PAB23043 Size 100 uL

Applications



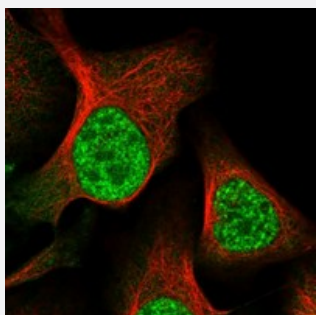
Western Blot

Western blot analysis of Lane 1: RT-4, Lane 2: U-251 MG, Lane 3: Human Plasma, Lane 4: Liver, Lane 5: Tonsil with RBM15B polyclonal antibody (Cat # PAB23043) at 1:250-1:500 dilution.



Immunohistochemistry (Formalin/PFA-fixed paraffin-embedded sections)

Immunohistochemical staining of human rectum with RBM15B polyclonal antibody (Cat # PAB23043) shows strong cytoplasmic positivity in endocrine cells at 1:500-1:1000 dilution.



Immunofluorescence

Immunofluorescent staining of human cell line U-2 OS with RBM15B polyclonal antibody (Cat # PAB23043) at 1-4 ug/mL dilution shows positivity in nucleus but not nucleoli.

Specification

Product Description

Rabbit polyclonal antibody raised against recombinant RBM15B.

Immunogen

Recombinant protein corresponding to amino acids of human RBM15B.

| | |
|---------------------|---|
| Sequence | GKKARDSENRHRTTEAEPKPLEEPKHETKCLKNLSEYAQTLQLGWNGLLVLKNSCFPTSMHILEG DQGVISLLKDHTSG |
| Host | Rabbit |
| Reactivity | Human |
| Form | Liquid |
| Purification | Antigen affinity purification |
| Isotype | IgG |
| Recommend Usage | Immunohistochemistry (1:500-1:1000) Western Blot (1:250-1:500) Immunofluorescence (1-4 ug/mL) The optimal working dilution should be determined by the end user. |
| Storage Buffer | In PBS, pH 7.2 (40% glycerol, 0.02% sodium azide) |
| Storage Instruction | Store at 4°C. For long term storage store at -20°C. Aliquot to avoid repeated freezing and thawing. |
| Note | This product contains sodium azide: a POISONOUS AND HAZARDOUS SUBSTANCE which should be handled by trained staff only. |

Applications

- Western Blot

Western blot analysis of Lane 1: RT-4, Lane 2: U-251 MG, Lane 3: Human Plasma, Lane 4: Liver, Lane 5: Tonsil with RBM15B polyclonal antibody (Cat # PAB23043) at 1:250-1:500 dilution.

- Immunohistochemistry (Formalin/PFA-fixed paraffin-embedded sections)

Immunohistochemical staining of human rectum with RBM15B polyclonal antibody (Cat # PAB23043) shows strong cytoplasmic positivity in endocrine cells at 1:500-1:1000 dilution.

- Immunofluorescence

Immunofluorescent staining of human cell line U-2 OS with RBM15B polyclonal antibody (Cat # PAB23043) at 1-4 ug/mL dilution shows positivity in nucleus but not nucleoli.

Gene Info — RBM15B

Entrez GeneID [29890](#)

Protein Accession# [Q8NDT2](#)

| | |
|--------------------|---|
| Gene Name | RBM15B |
| Gene Alias | HUMAGCGB, OTT3 |
| Gene Description | RNA binding motif protein 15B |
| Gene Ontology | Hyperlink |
| Gene Summary | Members of the SPEN (Split-end) family of proteins, including RBM15B, have repressor function in several signaling pathways and may bind to RNA through interaction with spliceosome components (Hiriart et al., 2005 [PubMed 16129689]).[supplied by OMIM] |
| Other Designations | chromosome 3p21.1 gene sequence one twenty two protein 3 |