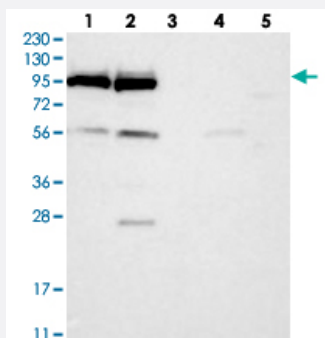


# DDX21 polyclonal antibody

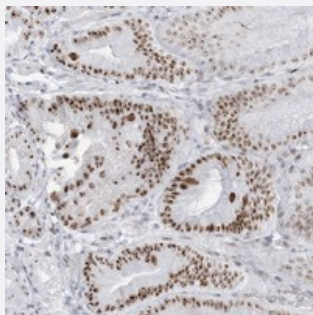
Catalog # PAB23032      Size 100 uL

## Applications



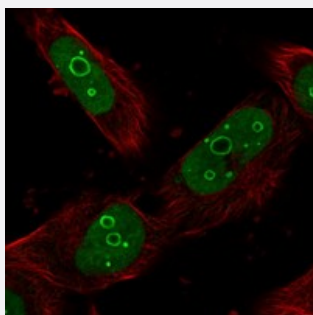
### Western Blot

Western blot analysis of Lane 1: RT-4, Lane 2: U-251 MG, Lane 3: Human Plasma, Lane 4: Liver, Lane 5: Tonsil with DDX21 polyclonal antibody (Cat # PAB23032) at 1:250-1:500 dilution.



### Immunohistochemistry (Formalin/PFA-fixed paraffin-embedded sections)

Immunohistochemical staining of human stomach with DDX21 polyclonal antibody (Cat # PAB23032) shows strong nucleolar positivity in glandular cells at 1:200-1:500 dilution.



### Immunofluorescence

Immunofluorescent staining of human cell line U-251 MG with DDX21 polyclonal antibody (Cat # PAB23032) at 1-4 ug/mL dilution shows positivity in nucleus and nucleoli.

## Specification

### Product Description

Rabbit polyclonal antibody raised against recombinant DDX21.

### Immunogen

Recombinant protein corresponding to amino acids of human DDX21.

Sequence	KPKSDKTEEIAEEEEETVFPKAKQVKKKAEPSEVDMNSPKSKKAKKKEEPSQNDISPKTKSLRKK KEPIEKKVV
Host	Rabbit
Reactivity	Human
Form	Liquid
Purification	Antigen affinity purification
Isotype	IgG
Recommend Usage	Immunohistochemistry (1:200-1:500) Western Blot (1:250-1:500) Immunofluorescence (1-4 ug/mL) The optimal working dilution should be determined by the end user.
Storage Buffer	In PBS, pH 7.2 (40% glycerol, 0.02% sodium azide)
Storage Instruction	Store at 4°C. For long term storage store at -20°C. Aliquot to avoid repeated freezing and thawing.
Note	This product contains sodium azide: a POISONOUS AND HAZARDOUS SUBSTANCE which should be handled by trained staff only.

## Applications

- Western Blot

Western blot analysis of Lane 1: RT-4, Lane 2: U-251 MG, Lane 3: Human Plasma, Lane 4: Liver, Lane 5: Tonsil with DDX21 polyclonal antibody (Cat # PAB23032) at 1:250-1:500 dilution.

- Immunohistochemistry (Formalin/PFA-fixed paraffin-embedded sections)

Immunohistochemical staining of human stomach with DDX21 polyclonal antibody (Cat # PAB23032) shows strong nucleolar positivity in glandular cells at 1:200-1:500 dilution.

- Immunofluorescence

Immunofluorescent staining of human cell line U-251 MG with DDX21 polyclonal antibody (Cat # PAB23032) at 1-4 ug/mL dilution shows positivity in nucleus and nucleoli.

## Gene Info — DDX21

Entrez GeneID [9188](#)

Protein Accession# [Q9NR30](#)

Gene Name	DDX21
Gene Alias	DKFZp686F21172, GUA, GURDB, RH-II/GU, RH-II/GuA
Gene Description	DEAD (Asp-Glu-Ala-Asp) box polypeptide 21
Omim ID	<a href="#">606357</a>
Gene Ontology	<a href="#">Hyperlink</a>
Gene Summary	<p>DEAD box proteins, characterized by the conserved motif Asp-Glu-Ala-Asp (DEAD), are putative RNA helicases. They are implicated in a number of cellular processes involving alteration of RNA secondary structure such as translation initiation, nuclear and mitochondrial splicing, and ribosome and spliceosome assembly. Based on their distribution patterns, some members of this family are believed to be involved in embryogenesis, spermatogenesis, and cellular growth and division. This gene encodes a DEAD box protein, which is an antigen recognized by autoimmune antibodies from a patient with watermelon stomach disease. This protein unwinds double-stranded RNA, folds single-stranded RNA, and may play important roles in ribosomal RNA biogenesis, RNA editing, RNA transport, and general transcription. [provided by RefSeq]</p>
Other Designations	DEAD/H (Asp-Glu-Ala-Asp/His) box polypeptide 21 Gu protein OTTHUMP00000019713 RNA helicase II/Gu alpha

## Disease

- [Alzheimer Disease](#)
- [Genetic Predisposition to Disease](#)