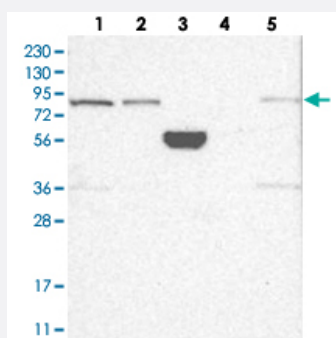


SCLT1 polyclonal antibody

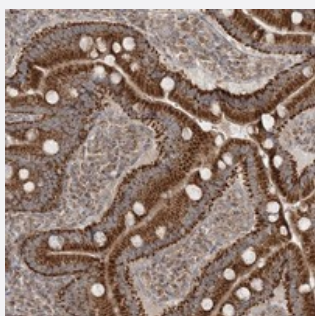
Catalog # PAB23025 Size 100 uL

Applications



Western Blot

Western blot analysis of Lane 1: RT-4, Lane 2: U-251 MG, Lane 3: Human Plasma, Lane 4: Liver, Lane 5: Tonsil with SCLT1 polyclonal antibody (Cat # PAB23025).



Immunohistochemistry (Formalin/PFA-fixed paraffin-embedded sections)

Immunohistochemical staining of human duodenum with SCLT1 polyclonal antibody (Cat # PAB23025) shows strong cytoplasmic positivity, with a granular pattern in glandular cells.

Specification

Product Description	Rabbit polyclonal antibody raised against recombinant SCLT1.
Immunogen	Recombinant protein corresponding to amino acids of human SCLT1.
Sequence	KTQAVELWQTVSQELDRHLHKLYQEHEMTEAQIHVFESQKQKDQLFDFQQLTKQLHVTNENMEVTN QQFLKTVTEQSVIIE
Host	Rabbit
Reactivity	Human
Form	Liquid

Purification	Antigen affinity purification
Isotype	IgG
Recommend Usage	Immunohistochemistry (1:20-1:50) Western Blot (1:250-1:500) The optimal working dilution should be determined by the end user.
Storage Buffer	In PBS, pH 7.2 (40% glycerol, 0.02% sodium azide)
Storage Instruction	Store at 4°C. For long term storage store at -20°C. Aliquot to avoid repeated freezing and thawing.
Note	This product contains sodium azide: a POISONOUS AND HAZARDOUS SUBSTANCE which should be handled by trained staff only.

Applications

- Western Blot

Western blot analysis of Lane 1: RT-4, Lane 2: U-251 MG, Lane 3: Human Plasma, Lane 4: Liver, Lane 5: Tonsil with SCLT1 polyclonal antibody (Cat # PAB23025).

- Immunohistochemistry (Formalin/PFA-fixed paraffin-embedded sections)

Immunohistochemical staining of human duodenum with SCLT1 polyclonal antibody (Cat # PAB23025) shows strong cytoplasmic positivity, with a granular pattern in glandular cells.

Gene Info — SCLT1

Entrez GeneID	132320
Protein Accession#	Q96NL6
Gene Name	SCLT1
Gene Alias	CAP1A, FLJ30655, FLJ36042, MGC70542, hCAP-1A
Gene Description	sodium channel and clathrin linker 1
Omim ID	611399
Gene Ontology	Hyperlink
Gene Summary	SCLT1 acts as a linker protein between the voltage-gated sodium channel Na(v)1.8 (SCN10A; MIM 604427) and clathrin (see CLTC, MIM 118955) (Liu et al., 2005 [PubMed 15797711]).[supplied by OMIM]

Other Designationssodium channel associated protein 1
