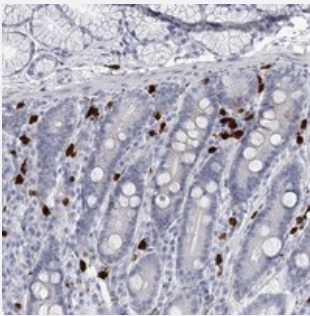


# CCDC147 polyclonal antibody

Catalog # PAB23024      Size 100 uL

## Applications



### Immunohistochemistry (Formalin/PFA-fixed paraffin-embedded sections)

Immunohistochemical staining of human duodenum with CCDC147 polyclonal antibody (Cat # PAB23024) shows strong cytoplasmic positivity in inflammatory cells at 1:1000-1:2500 dilution.

## Specification

Product Description	Rabbit polyclonal antibody raised against recombinant CCDC147.
Immunogen	Recombinant protein corresponding to amino acids of human CCDC147.
Sequence	EKGGKQVLEESAFAEEMERDFQGVLHELSGDKSLEKFRIEYERLHAVMKKSYDNEKRLMAKCREL NAEIVNSAKVATALKLSQDDQTTIASLKKE
Host	Rabbit
Reactivity	Human
Form	Liquid
Purification	Antigen affinity purification
Isotype	IgG
Recommend Usage	Immunohistochemistry (1:1000-1:2500) The optimal working dilution should be determined by the end user.
Storage Buffer	In PBS, pH 7.2 (40% glycerol, 0.02% sodium azide)

**Storage Instruction**

Store at 4°C. For long term storage store at -20°C.  
Aliquot to avoid repeated freezing and thawing.

**Note**

This product contains sodium azide: a POISONOUS AND HAZARDOUS SUBSTANCE which should be handled by trained staff only.

## Applications

- Immunohistochemistry (Formalin/PFA-fixed paraffin-embedded sections)

Immunohistochemical staining of human duodenum with CCDC147 polyclonal antibody (Cat # PAB23024) shows strong cytoplasmic positivity in inflammatory cells at 1:1000-1:2500 dilution.

## Gene Info — CCDC147

**Entrez GeneID**[159686](#)**Protein Accession#**[Q5T655](#)**Gene Name**

CCDC147

**Gene Alias**

C10orf80, FLJ35908, MGC126475, bA127L20.4, bA127L20.5, bA554P13.1

**Gene Description**

coiled-coil domain containing 147

**Gene Ontology**[Hyperlink](#)**Other Designations**

OTTHUMP00000020442|bA127L20.4 (novel protein)|bA127L20.5 (novel protein)