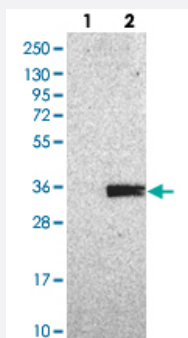


# CUEDC2 polyclonal antibody

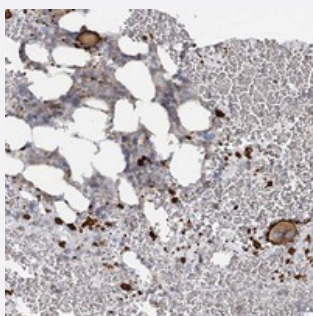
Catalog # PAB23022      Size 100 uL

## Applications



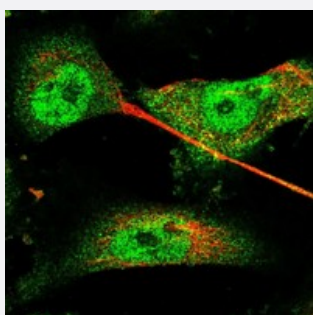
### Western Blot (Transfected lysate)

Western blot analysis of Lane 1: Negative control (vector only transfected HEK293T lysate), Lane 2: Over-expression Lysate (Co-expressed with a C-terminal myc-DDK tag (~3.1 kDa) in mammalian HEK293T cells) with CUEDC2 polyclonal antibody (Cat # PAB23022) at 1:250-1:500 dilution.



### Immunohistochemistry (Formalin/PFA-fixed paraffin-embedded sections)

Immunohistochemical staining of human bone marrow with CUEDC2 polyclonal antibody (Cat # PAB23022) shows distinct positivity megakaryocytes and thrombocytes at 1:500-1:1000 dilution.



### Immunofluorescence

Immunofluorescent staining of human cell line U-251 MG with CUEDC2 polyclonal antibody (Cat # PAB23022) at 1-4 ug/mL dilution shows positivity in nucleus but not nucleoli and cytoplasm.

## Specification

### Product Description

Rabbit polyclonal antibody raised against recombinant CUEDC2.

### Immunogen

Recombinant protein corresponding to amino acids of human CUEDC2.

Sequence	DLSGLDEVIFSYYVLGVLEDLGPSPGPSEENFDMEAFTMEMEAYVPGFAHIPRGTIGDMMQKLSGQL SDARNKENLQPQSSGVQGQVPI
Host	Rabbit
Reactivity	Human
Form	Liquid
Purification	Antigen affinity purification
Isotype	IgG
Recommend Usage	Immunohistochemistry (1:500-1:1000) Western Blot (1:250-1:500) Immunofluorescence (1-4 ug/mL) The optimal working dilution should be determined by the end user.
Storage Buffer	In PBS, pH 7.2 (40% glycerol, 0.02% sodium azide)
Storage Instruction	Store at 4°C. For long term storage store at -20°C. Aliquot to avoid repeated freezing and thawing.
Note	This product contains sodium azide: a POISONOUS AND HAZARDOUS SUBSTANCE which should be handled by trained staff only.

## Applications

- Western Blot (Transfected lysate)

Western blot analysis of Lane 1: Negative control (vector only transfected HEK293T lysate), Lane 2: Over-expression Lysate (Co-expressed with a C-terminal myc-DDK tag (~3.1 kDa) in mammalian HEK293T cells) with CUEDC2 polyclonal antibody (Cat # PAB23022) at 1:250-1:500 dilution.

- Immunohistochemistry (Formalin/PFA-fixed paraffin-embedded sections)

Immunohistochemical staining of human bone marrow with CUEDC2 polyclonal antibody (Cat # PAB23022) shows distinct positivity megakaryocytes and thrombocytes at 1:500-1:1000 dilution.

- Immunofluorescence

Immunofluorescent staining of human cell line U-251 MG with CUEDC2 polyclonal antibody (Cat # PAB23022) at 1-4 ug/mL dilution shows positivity in nucleus but not nucleoli and cytoplasm.

## Gene Info — CUEDC2

Entrez GeneID [79004](#)

Protein Accession#	<a href="#">Q9H467</a>
Gene Name	CUEDC2
Gene Alias	C10orf66, MGC2491, bA18I14.5
Gene Description	CUE domain containing 2
Gene Ontology	<a href="#">Hyperlink</a>
Other Designations	OTTHUMP00000020368

## Disease

- [Alzheimer Disease](#)
- [Genetic Predisposition to Disease](#)