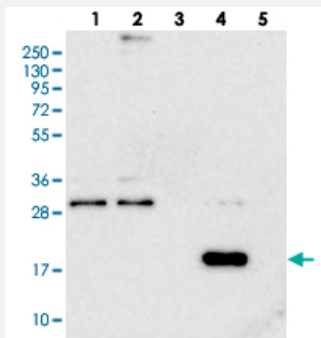


RWDD4A polyclonal antibody

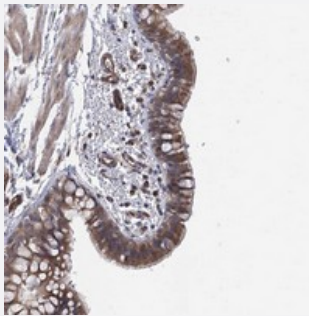
Catalog # PAB23015 Size 100 uL

Applications



Western Blot

Western blot analysis of Lane 1: RT-4, Lane 2: U-251 MG, Lane 3: Human Plasma, Lane 4: Liver, Lane 5: Tonsil with RWDD4A polyclonal antibody (Cat # PAB23015).



Immunohistochemistry (Formalin/PFA-fixed paraffin-embedded sections)

Immunohistochemical staining of human bronchus with RWDD4A polyclonal antibody (Cat # PAB23015) shows moderate cytoplasmic positivity in respiratory epithelial cells.

Specification

Product Description	Rabbit polyclonal antibody raised against recombinant RWDD4A.
Immunogen	Recombinant protein corresponding to amino acids of human RWDD4A.
Sequence	EALRSIYEGDESFRELSPVSFQYRIGENGDPKAFLEISWTETYPQTPPILSMNAFFNNTISSAVKQSI LAKLQEAVEANLGTAM
Host	Rabbit
Reactivity	Human
Form	Liquid

Purification	Antigen affinity purification
Isotype	IgG
Recommend Usage	Immunohistochemistry (1:50-1:200) Western Blot (1:250-1:500) The optimal working dilution should be determined by the end user.
Storage Buffer	In PBS, pH 7.2 (40% glycerol, 0.02% sodium azide)
Storage Instruction	Store at 4°C. For long term storage store at -20°C. Aliquot to avoid repeated freezing and thawing.
Note	This product contains sodium azide: a POISONOUS AND HAZARDOUS SUBSTANCE which should be handled by trained staff only.

Applications

- Western Blot

Western blot analysis of Lane 1: RT-4, Lane 2: U-251 MG, Lane 3: Human Plasma, Lane 4: Liver, Lane 5: Tonsil with RWDD4A polyclonal antibody (Cat # PAB23015).

- Immunohistochemistry (Formalin/PFA-fixed paraffin-embedded sections)

Immunohistochemical staining of human bronchus with RWDD4A polyclonal antibody (Cat # PAB23015) shows moderate cytoplasmic positivity in respiratory epithelial cells.

Gene Info — RWDD4A

Entrez GeneID	201965
Protein Accession#	Q6NW29
Gene Name	RWDD4A
Gene Alias	FAM28A, MGC10198
Gene Description	RWD domain containing 4A
Gene Ontology	Hyperlink
Gene Summary	member A
Other Designations	family with sequence similarity 28, member A