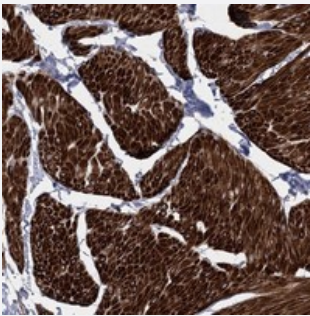


ARSJ polyclonal antibody

Catalog # PAB23010 Size 100 uL

Applications



Immunohistochemistry (Formalin/PFA-fixed paraffin-embedded sections)

Immunohistochemical staining of human smooth muscle with ARSJ polyclonal antibody (Cat # PAB23010) shows strong cytoplasmic positivity in smooth muscle cells at 1:20-1:50 dilution.

Specification

Product Description	Rabbit polyclonal antibody raised against recombinant ARSJ.
Immunogen	Recombinant protein corresponding to amino acids of human ARSJ.
Sequence	DSPGMCGYDLYENDNAAWDYDNGYSTQMYTQQRVQQILASHNPTKPIFLYIAYQAVHSPLQAPGRY FEHYRSIININRRRYAAMLSCLEAINNV
Host	Rabbit
Reactivity	Human
Form	Liquid
Purification	Antigen affinity purification
Isotype	IgG
Recommend Usage	Immunohistochemistry (1:20-1:50) The optimal working dilution should be determined by the end user.
Storage Buffer	In PBS, pH 7.2 (40% glycerol, 0.02% sodium azide)

Storage Instruction

Store at 4°C. For long term storage store at -20°C.
Aliquot to avoid repeated freezing and thawing.

Note

This product contains sodium azide: a POISONOUS AND HAZARDOUS SUBSTANCE which should be handled by trained staff only.

Applications

- Immunohistochemistry (Formalin/PFA-fixed paraffin-embedded sections)

Immunohistochemical staining of human smooth muscle with ARSJ polyclonal antibody (Cat # PAB23010) shows strong cytoplasmic positivity in smooth muscle cells at 1:20-1:50 dilution.

Gene Info — ARSJ

Entrez GeneID[79642](#)**Protein Accession#**[Q5FYB0](#)**Gene Name**

ARSJ

Gene Alias

FLJ23548

Gene Description

arylsulfatase family, member J

Omim ID[610010](#)**Gene Ontology**[Hyperlink](#)**Gene Summary**

Sulfatases (EC 3.1.5.6), such as ARSJ, hydrolyze sulfate esters from sulfated steroids, carbohydrates, proteoglycans, and glycolipids. They are involved in hormone biosynthesis, modulation of cell signaling, and degradation of macromolecules (Sardiello et al., 2005 [PubMed 16174644]).[supplied by OMIM]

Other Designations

arylsulfatase J

Disease

- [Alcoholism](#)
- [Genetic Predisposition to Disease](#)