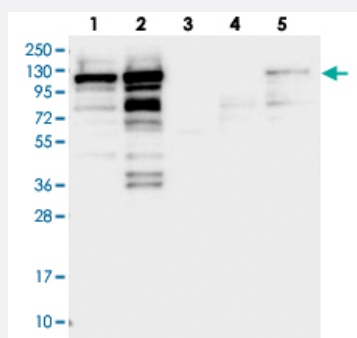


SH3PXD2B polyclonal antibody

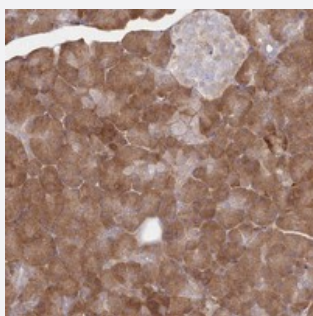
Catalog # PAB23008 Size 100 uL

Applications



Western Blot

Western blot analysis of Lane 1: RT-4, Lane 2: U-251 MG, Lane 3: Human Plasma, Lane 4: Liver, Lane 5: Tonsil with SH3PXD2B polyclonal antibody (Cat # PAB23008).



Immunohistochemistry (Formalin/PFA-fixed paraffin-embedded sections)

Immunohistochemical staining of human pancreas with SH3PXD2B polyclonal antibody (Cat # PAB23008) shows moderate cytoplasmic positivity in exocrine glandular cells.

Specification

Product Description	Rabbit polyclonal antibody raised against recombinant SH3PXD2B.
Immunogen	Recombinant protein corresponding to amino acids of human SH3PXD2B.
Sequence	PPGVILPMPAKHIPPARDSRRPEPKPDKSRLFQLKNDMGLECGHKVLAKEVKKPNLRPISKST DLPEEKPDATPQNPFLKSRPQV
Host	Rabbit
Reactivity	Human
Form	Liquid

Purification	Antigen affinity purification
Isotype	IgG
Recommend Usage	Immunohistochemistry (1:200-1:500) Western Blot (1:250-1:500) The optimal working dilution should be determined by the end user.
Storage Buffer	In PBS, pH 7.2 (40% glycerol, 0.02% sodium azide)
Storage Instruction	Store at 4°C. For long term storage store at -20°C. Aliquot to avoid repeated freezing and thawing.
Note	This product contains sodium azide: a POISONOUS AND HAZARDOUS SUBSTANCE which should be handled by trained staff only.

Applications

- Western Blot

Western blot analysis of Lane 1: RT-4, Lane 2: U-251 MG, Lane 3: Human Plasma, Lane 4: Liver, Lane 5: Tonsil with SH3PXD2B polyclonal antibody (Cat # PAB23008).

- Immunohistochemistry (Formalin/PFA-fixed paraffin-embedded sections)

Immunohistochemical staining of human pancreas with SH3PXD2B polyclonal antibody (Cat # PAB23008) shows moderate cytoplasmic positivity in exocrine glandular cells.

Gene Info — SH3PXD2B

Entrez GeneID	285590
Protein Accession#	A1X283
Gene Name	SH3PXD2B
Gene Alias	FAD49, FLJ20831, HOFI, KIAA1295
Gene Description	SH3 and PX domains 2B
Gene Ontology	Hyperlink
Other Designations	adaptor protein HOFI

Disease

- [Obesity](#)
- [Tobacco Use Disorder](#)