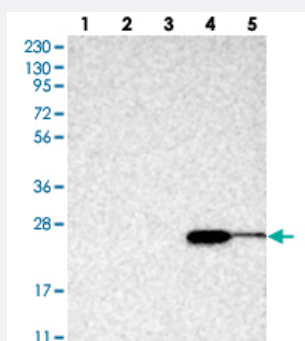


ABHD14B polyclonal antibody

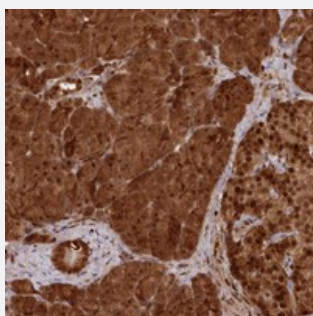
Catalog # PAB23002 Size 100 uL

Applications



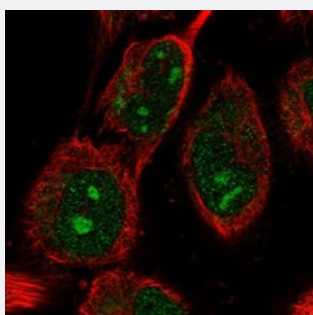
Western Blot

Western blot analysis of Lane 1: RT-4, Lane 2: U-251 MG, Lane 3: Human Plasma, Lane 4: Liver, Lane 5: Tonsil with ABHD14B polyclonal antibody (Cat # PAB23002) at 1:250-1:500 dilution.



Immunohistochemistry (Formalin/PFA-fixed paraffin-embedded sections)

Immunohistochemical staining of human pancreas with ABHD14B polyclonal antibody (Cat # PAB23002) shows strong cytoplasmic and nuclear positivity in exocrine glandular cells and islet cells at 1:50-1:200 dilution.



Immunofluorescence

Immunofluorescent staining of human cell line U-251 MG with ABHD14B polyclonal antibody (Cat # PAB23002) at 1-4 ug/mL dilution shows positivity in nucleus, nucleoli and cytoplasm.

Specification

Product Description

Rabbit polyclonal antibody raised against recombinant ABHD14B.

Immunogen

Recombinant protein corresponding to amino acids of human ABHD14B.

Sequence	PICTDKINAANYASVKTPALIVYGDQDPMGQTSFEHLKQLPNHRVLMKGAGHPCYLDKPEEWHTG LLDFL
Host	Rabbit
Reactivity	Human
Form	Liquid
Purification	Antigen affinity purification
Isotype	IgG
Recommend Usage	Immunohistochemistry (1:50-1:200) Western Blot (1:250-1:500) Immunofluorescence (1-4 ug/mL) The optimal working dilution should be determined by the end user.
Storage Buffer	In PBS, pH 7.2 (40% glycerol, 0.02% sodium azide)
Storage Instruction	Store at 4°C. For long term storage store at -20°C. Aliquot to avoid repeated freezing and thawing.
Note	This product contains sodium azide: a POISONOUS AND HAZARDOUS SUBSTANCE which should be handled by trained staff only.

Applications

- Western Blot

Western blot analysis of Lane 1: RT-4, Lane 2: U-251 MG, Lane 3: Human Plasma, Lane 4: Liver, Lane 5: Tonsil with ABHD14B polyclonal antibody (Cat # PAB23002) at 1:250-1:500 dilution.

- Immunohistochemistry (Formalin/PFA-fixed paraffin-embedded sections)

Immunohistochemical staining of human pancreas with ABHD14B polyclonal antibody (Cat # PAB23002) shows strong cytoplasmic and nuclear positivity in exocrine glandular cells and islet cells at 1:50-1:200 dilution.

- Immunofluorescence

Immunofluorescent staining of human cell line U-251 MG with ABHD14B polyclonal antibody (Cat # PAB23002) at 1-4 ug/mL dilution shows positivity in nucleus, nucleoli and cytoplasm.

Gene Info — ABHD14B

Entrez GeneID [84836](#)

Protein Accession# [Q96IU4](#)

Gene Name	ABHD14B
Gene Alias	CIB, MGC15429
Gene Description	abhydrolase domain containing 14B
Gene Ontology	Hyperlink
Other Designations	-