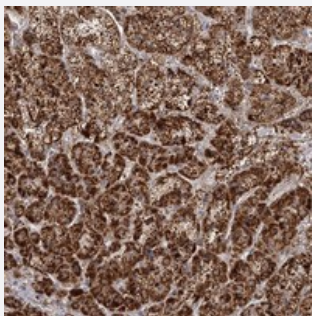


LACTB polyclonal antibody

Catalog # PAB22989 Size 100 uL

Applications



Immunohistochemistry (Formalin/PFA-fixed paraffin-embedded sections)

Immunohistochemical staining of human adrenal gland with LACTB polyclonal antibody (Cat # PAB22989) shows strong cytoplasmic positivity in cortical cells at 1:50-1:200 dilution.

Specification

Product Description	Rabbit polyclonal antibody raised against recombinant LACTB.
Immunogen	Recombinant protein corresponding to amino acids of human LACTB.
Sequence	NSNENLLPGYLPETMVMWTPVPNTMSWDKEGKYAMAWGVVEKKQTYGSCRKQRHYASHT GGAVGASSVLLVLPEELDTETINKVP
Host	Rabbit
Reactivity	Human
Form	Liquid
Purification	Antigen affinity purification
Isotype	IgG
Recommend Usage	Immunohistochemistry (1:50-1:200) The optimal working dilution should be determined by the end user.
Storage Buffer	In PBS, pH 7.2 (40% glycerol, 0.02% sodium azide)

Storage Instruction

Store at 4°C. For long term storage store at -20°C.
Aliquot to avoid repeated freezing and thawing.

Note

This product contains sodium azide: a POISONOUS AND HAZARDOUS SUBSTANCE which should be handled by trained staff only.

Applications

- Immunohistochemistry (Formalin/PFA-fixed paraffin-embedded sections)

Immunohistochemical staining of human adrenal gland with LACTB polyclonal antibody (Cat # PAB22989) shows strong cytoplasmic positivity in cortical cells at 1:50-1:200 dilution.

Gene Info — LACTB

Entrez GeneID[114294](#)**Protein Accession#**[P83111](#)**Gene Name**

LACTB

Gene Alias

FLJ14902, G24, MRPL56

Gene Description

lactamase, beta

Omim ID[608440](#)**Gene Ontology**[Hyperlink](#)**Gene Summary**

This gene encodes a protein from the large 39S subunit of the mitochondrial ribosome (mitoribosome). The encoded protein has some sequence similarity to prokaryotic beta-lactamases but most of the residues that are responsible for the beta-lactamase activity are not conserved between the two proteins. [provided by RefSeq]

Other Designations

mitochondrial 39S ribosomal protein L56|mitochondrial ribosomal protein L56|serine beta lactamase-like protein LACTB

Disease

- [Drug Hypersensitivity](#)