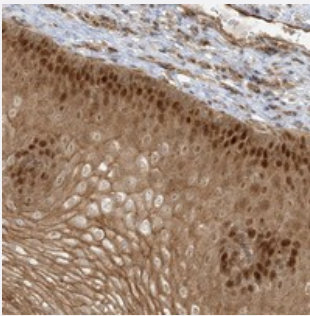


NAF1 polyclonal antibody

Catalog # PAB22969 Size 100 uL

Applications



Immunohistochemistry (Formalin/PFA-fixed paraffin-embedded sections)

Immunohistochemical staining of human esophagus with NAF1 polyclonal antibody (Cat # PAB22969) shows strong nuclear and cytoplasmic positivity in squamous epithelial cells at 1:50-1:200 dilution.

Specification

Product Description	Rabbit polyclonal antibody raised against recombinant NAF1.
Immunogen	Recombinant protein corresponding to amino acids of human NAF1.
Sequence	EIFGPVAHPFYVLRFNSSDHIESKGIIKETMYFAPSMKDFTQYIFTEKLKQDKGSDASWKNDQEP PPEALDFSDDEKEKEAKQRKKSQIQGRK
Host	Rabbit
Reactivity	Human
Form	Liquid
Purification	Antigen affinity purification
Isotype	IgG
Recommend Usage	Immunohistochemistry (1:50-1:200) The optimal working dilution should be determined by the end user.
Storage Buffer	In PBS, pH 7.2 (40% glycerol, 0.02% sodium azide)

Storage Instruction

Store at 4°C. For long term storage store at -20°C.
Aliquot to avoid repeated freezing and thawing.

Note

This product contains sodium azide: a POISONOUS AND HAZARDOUS SUBSTANCE which should be handled by trained staff only.

Applications

- Immunohistochemistry (Formalin/PFA-fixed paraffin-embedded sections)

Immunohistochemical staining of human esophagus with NAF1 polyclonal antibody (Cat # PAB22969) shows strong nuclear and cytoplasmic positivity in squamous epithelial cells at 1:50-1:200 dilution.

Gene Info — NAF1

Entrez GeneID[92345](#)**Protein Accession#**[Q96HR8](#)**Gene Name**

NAF1

Gene Alias

-

Gene Description

nuclear assembly factor 1 homolog (S. cerevisiae)

Gene Ontology[Hyperlink](#)**Other Designations**

nuclear assembly factor 1 homolog

Disease

- [Liver Diseases](#)