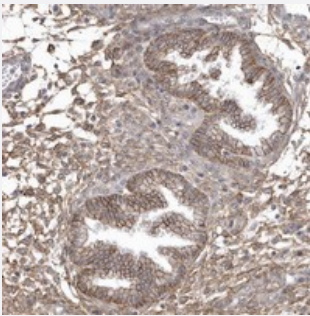


CRIP3 polyclonal antibody

Catalog # PAB22964 Size 100 uL

Applications



Immunohistochemistry (Formalin/PFA-fixed paraffin-embedded sections)

Immunohistochemical staining of human corpus, uterine with CRIP3 polyclonal antibody (Cat # PAB22964) shows moderate membranous and cytoplasmic positivity in glandular cells.

Specification

| | |
|---------------------|--|
| Product Description | Rabbit polyclonal antibody raised against recombinant CRIP3. |
| Immunogen | Recombinant protein corresponding to amino acids of human CRIP3. |
| Sequence | CYGALFGPRGVNIGGVGSYLNPPTSPGCTTPLSPSSFSPPRPRTGLPQGKKSPPHMKFTGET SLCPGCGEPVYFAEKVMSLGRNWHRP |
| Host | Rabbit |
| Reactivity | Human |
| Form | Liquid |
| Purification | Antigen affinity purification |
| Isotype | IgG |
| Recommend Usage | Immunohistochemistry (1:20-1:50) The optimal working dilution should be determined by the end user. |
| Storage Buffer | In PBS, pH 7.2 (40% glycerol, 0.02% sodium azide) |

Storage Instruction

Store at 4°C. For long term storage store at -20°C.
Aliquot to avoid repeated freezing and thawing.

Note

This product contains sodium azide: a POISONOUS AND HAZARDOUS SUBSTANCE which should be handled by trained staff only.

Applications

- Immunohistochemistry (Formalin/PFA-fixed paraffin-embedded sections)

Immunohistochemical staining of human corpus, uterine with CRIP3 polyclonal antibody (Cat # PAB22964) shows moderate membranous and cytoplasmic positivity in glandular cells.

Gene Info — CRIP3

Entrez GeneID[401262](#)**Protein Accession#**[Q6Q6R5](#)**Gene Name**

CRIP3

Gene Alias

TLP, TLP-A, bA480N24.2

Gene Description

cysteine-rich protein 3

Gene Ontology[Hyperlink](#)**Other Designations**OTTHUMP00000016433|OTTHUMP00000016434|OTTHUMP00000195154|thymus LIM protein
TLP-A