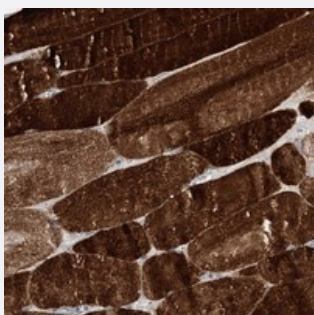


HELT polyclonal antibody

Catalog # PAB22963 Size 100 uL

Applications



Immunohistochemistry (Formalin/PFA-fixed paraffin-embedded sections)

Immunohistochemical staining of human skeletal muscle with HELT polyclonal antibody (Cat # PAB22963) shows strong cytoplasmic positivity in myocytes at 1:200-1:500 dilution.

Specification

Product Description	Rabbit polyclonal antibody raised against recombinant HELT.
Immunogen	Recombinant protein corresponding to amino acids of human HELT.
Sequence	SDKLKERKVSRLSPNGTCALVVEASDSPTRHLGGPMAGKCPHGTLSEESRVRT
Host	Rabbit
Reactivity	Human
Form	Liquid
Purification	Antigen affinity purification
Isotype	IgG
Recommend Usage	Immunohistochemistry (1:200-1:500) The optimal working dilution should be determined by the end user.
Storage Buffer	In PBS, pH 7.2 (40% glycerol, 0.02% sodium azide)
Storage Instruction	Store at 4°C. For long term storage store at -20°C. Aliquot to avoid repeated freezing and thawing.

Note

This product contains sodium azide: a POISONOUS AND HAZARDOUS SUBSTANCE which should be handled by trained staff only.

Applications

- Immunohistochemistry (Formalin/PFA-fixed paraffin-embedded sections)

Immunohistochemical staining of human skeletal muscle with HELT polyclonal antibody (Cat # PAB22963) shows strong cytoplasmic positivity in myocytes at 1:200-1:500 dilution.

Gene Info — HELT

Entrez GeneID	391723
Protein Accession#	A6NFD8
Gene Name	HELT
Gene Alias	HCM1228, HESL, Mgn
Gene Description	HES/HEY-like transcription factor
Gene Ontology	Hyperlink
Other Designations	HES-like Hairy and enhancer of split-related protein HELT Heslike Hey-like transcription factor Hey-like transcriptional repressor Megane bHLH factor