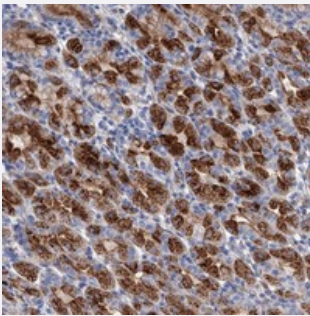


GPR155 polyclonal antibody

Catalog # PAB22956 Size 100 uL

Applications



Immunohistochemistry (Formalin/PFA-fixed paraffin-embedded sections)

Immunohistochemical staining of human stomach with GPR155 polyclonal antibody (Cat # PAB22956) shows strong cytoplasmic positivity in glandular cells at 1:50-1:200 dilution.

Specification

Product Description	Rabbit polyclonal antibody raised against recombinant GPR155.
Immunogen	Recombinant protein corresponding to amino acids of human GPR155.
Sequence	HLILPFKRRLEFLWNNKDTAENRDSVPSEEIKMTCQQFIHYHRLDCIRNIVKERRCGAKTSAGTFC GCDLVSW
Host	Rabbit
Reactivity	Human
Form	Liquid
Purification	Antigen affinity purification
Isotype	IgG
Recommend Usage	Immunohistochemistry (1:50-1:200) The optimal working dilution should be determined by the end user.
Storage Buffer	In PBS, pH 7.2 (40% glycerol, 0.02% sodium azide)

Storage Instruction

Store at 4°C. For long term storage store at -20°C.
Aliquot to avoid repeated freezing and thawing.

Note

This product contains sodium azide: a POISONOUS AND HAZARDOUS SUBSTANCE which should be handled by trained staff only.

Applications

- Immunohistochemistry (Formalin/PFA-fixed paraffin-embedded sections)

Immunohistochemical staining of human stomach with GPR155 polyclonal antibody (Cat # PAB22956) shows strong cytoplasmic positivity in glandular cells at 1:50-1:200 dilution.

Gene Info — GPR155

Entrez GeneID[151556](#)**Protein Accession#**[Q7Z3F1](#)**Gene Name**

GPR155

Gene Alias

DEP.7, DEPDC3, FLJ31819, FLJ39346, PGR22

Gene Description

G protein-coupled receptor 155

Gene Ontology[Hyperlink](#)**Other Designations**

OTTHUMP00000163176

Disease

- [Tobacco Use Disorder](#)