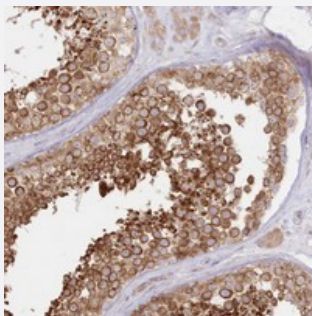


C4orf40 polyclonal antibody

Catalog # PAB22955 Size 100 uL

Applications



Immunohistochemistry (Formalin/PFA-fixed paraffin-embedded sections)

Immunohistochemical staining of human testis with C4orf40 polyclonal antibody (Cat # PAB22955) shows strong cytoplasmic positivity in seminiferous duct cells.

Specification

Product Description	Rabbit polyclonal antibody raised against recombinant C4orf40.
Immunogen	Recombinant protein corresponding to amino acids of human C4orf40.
Sequence	RRFPFIGEDDNDGGHPLHPSLNIPYGIRNLPPPLYRPNVTVPSTPGNTYTDGLPSYPWILTSPGF PYVYHIRGFPLATQLNPPLP
Host	Rabbit
Reactivity	Human
Form	Liquid
Purification	Antigen affinity purification
Isotype	IgG
Recommend Usage	Immunohistochemistry (1:50-1:200) The optimal working dilution should be determined by the end user.
Storage Buffer	In PBS, pH 7.2 (40% glycerol, 0.02% sodium azide)

Storage Instruction

Store at 4°C. For long term storage store at -20°C.
Aliquot to avoid repeated freezing and thawing.

Note

This product contains sodium azide: a POISONOUS AND HAZARDOUS SUBSTANCE which should be handled by trained staff only.

Applications

- Immunohistochemistry (Formalin/PFA-fixed paraffin-embedded sections)

Immunohistochemical staining of human testis with C4orf40 polyclonal antibody (Cat # PAB22955) shows strong cytoplasmic positivity in seminiferous duct cells.

Gene Info — C4orf40

Entrez GeneID[401137](#)**Protein Accession#**[Q6MZM9](#)**Gene Name**

C4orf40

Gene Alias

-

Gene Description

chromosome 4 open reading frame 40

Gene Ontology[Hyperlink](#)**Other Designations**

hypothetical protein LOC401137