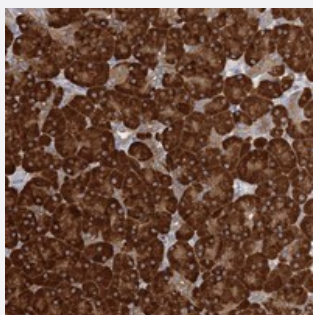


FAM110C polyclonal antibody

Catalog # PAB22953 Size 100 uL

Applications



Immunohistochemistry (Formalin/PFA-fixed paraffin-embedded sections)

Immunohistochemical staining of human pancreas with FAM110C polyclonal antibody (Cat # PAB22953) shows strong cytoplasmic positivity in exocrine glandular cells at 1:200-1:500 dilution.

Specification

Product Description	Rabbit polyclonal antibody raised against recombinant FAM110C.
Immunogen	Recombinant protein corresponding to amino acids of human FAM110C.
Sequence	YRQKCEFVRGSGADGPRASLVKKLFQGP GKDKAPVPRTGDEGKAGNPETV
Host	Rabbit
Reactivity	Human
Form	Liquid
Purification	Antigen affinity purification
Isotype	IgG
Recommend Usage	Immunohistochemistry (1:200-1:500) The optimal working dilution should be determined by the end user.
Storage Buffer	In PBS, pH 7.2 (40% glycerol, 0.02% sodium azide)
Storage Instruction	Store at 4°C. For long term storage store at -20°C. Aliquot to avoid repeated freezing and thawing.

Note

This product contains sodium azide: a POISONOUS AND HAZARDOUS SUBSTANCE which should be handled by trained staff only.

Applications

- Immunohistochemistry (Formalin/PFA-fixed paraffin-embedded sections)

Immunohistochemical staining of human pancreas with FAM110C polyclonal antibody (Cat # PAB22953) shows strong cytoplasmic positivity in exocrine glandular cells at 1:200-1:500 dilution.

Gene Info — FAM110C

Entrez GeneID	642273
---------------	------------------------

Protein Accession#	Q1W6H9
--------------------	------------------------

Gene Name	FAM110C
-----------	---------

Gene Alias	-
------------	---

Gene Description	family with sequence similarity 110, member C
------------------	---

Omim ID	611395
---------	------------------------

Gene Ontology	Hyperlink
---------------	---------------------------

Gene Summary	O
--------------	---

Other Designations	hypothetical protein LOC642273
--------------------	--------------------------------