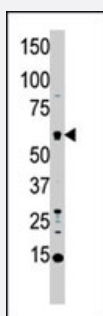


STK4 polyclonal antibody

Catalog # PAB2295

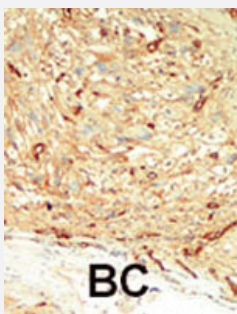
Size 400 uL

Applications



Western Blot (Cell lysate)

Western blot analysis of STK4 polyclonal antibody (Cat # PAB2295) in HL-60 cell lysate. MST1 (arrow) was detected using purified polyclonal antibody. Secondary HRP-anti-rabbit was used for signal visualization with chemiluminescence.



Immunohistochemistry (Formalin/PFA-fixed paraffin-embedded sections)

Formalin-fixed and paraffin-embedded human cancer tissue reacted with the STK4 polyclonal antibody (Cat # PAB2295), which was peroxidase-conjugated to the secondary antibody, followed by DAB staining. This data demonstrates the use of this antibody for immunohistochemistry; clinical relevance has not been evaluated. BC = breast carcinoma.

Specification

Product Description	Rabbit polyclonal antibody raised against synthetic peptide of STK4.
Immunogen	A synthetic peptide (conjugated with KLH) corresponding to C-terminus of human STK4.
Host	Rabbit
Reactivity	Human
Form	Liquid
Purification	Protein G purification

Recommend Usage	Western Blot (1:1000) Immunohistochemistry (1:50-100) The optimal working dilution should be determined by the end user.
Storage Buffer	In PBS (0.09% sodium azide)
Storage Instruction	Store at 4°C. For long term storage store at -20°C. Aliquot to avoid repeated freezing and thawing.
Note	This product contains sodium azide: a POISONOUS AND HAZARDOUS SUBSTANCE which should be handled by trained staff only.

Applications

- Western Blot (Cell lysate)

Western blot analysis of STK4 polyclonal antibody (Cat # PAB2295) in HL-60 cell lysate. MST1 (arrow) was detected using purified polyclonal antibody. Secondary HRP-anti-rabbit was used for signal visualization with chemiluminescence.

- Immunohistochemistry (Formalin/PFA-fixed paraffin-embedded sections)

Formalin-fixed and paraffin-embedded human cancer tissue reacted with the STK4 polyclonal antibody (Cat # PAB2295), which was peroxidase-conjugated to the secondary antibody, followed by DAB staining. This data demonstrates the use of this antibody for immunohistochemistry; clinical relevance has not been evaluated. BC = breast carcinoma.

Gene Info — STK4

Entrez GeneID	6789
Protein Accession#	Q13043
Gene Name	STK4
Gene Alias	DKFZp686A2068, KRS2, MST1, YSK3
Gene Description	serine/threonine kinase 4
Omim ID	604965
Gene Ontology	Hyperlink
Gene Summary	The protein encoded by this gene is a cytoplasmic kinase that is structurally similar to the yeast Ste20p kinase, which acts upstream of the stress-induced mitogen-activated protein kinase cascade. The encoded protein can phosphorylate myelin basic protein and undergoes autophosphorylation. A caspase-cleaved fragment of the encoded protein has been shown to be capable of phosphorylating histone H2B. The particular phosphorylation catalyzed by this protein has been correlated with apoptosis, and it's possible that this protein induces the chromatin condensation observed in this process. [provided by RefSeq]

Other Designations

OTTHUMP00000043418|dJ211D12.2 (serine/threonine kinase 4 (MST1, KRS2))|kinase responsive to stress 2|mammalian sterile 20-like 1|yeast Ste20-like

Publication Reference

- [Down-regulation of mammalian sterile 20-like kinase 1 by heat shock protein 70 mediates cisplatin resistance in prostate cancer cells.](#)

Ren A, Yan G, You B, Sun J.

Cancer Research 2008 Apr; 68(7):2266.

Pathway

- [MAPK signaling pathway](#)
- [Non-small cell lung cancer](#)
- [Pathways in cancer](#)

Disease

- [Kidney Failure](#)
- [Tobacco Use Disorder](#)