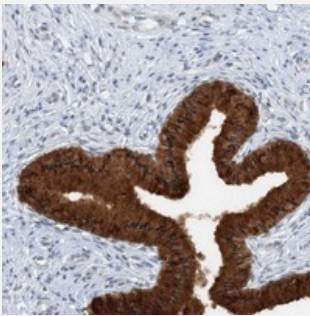


ASCL4 polyclonal antibody

Catalog # PAB22948 Size 100 uL

Applications



Immunohistochemistry (Formalin/PFA-fixed paraffin-embedded sections)

Immunohistochemical staining of human cervix, uterine with ASCL4 polyclonal antibody (Cat # PAB22948) strong cytoplasmic positivity in glandular cells at 1:200-1:500 dilution.

Specification

Product Description	Rabbit polyclonal antibody raised against recombinant ASCL4.
Immunogen	Recombinant protein corresponding to amino acids of human ASCL4.
Sequence	METRKAERLALPYSLRTAPLGVPGLPRRDPLRVALRLDAACWEWARGCARGWQYLPV PLDSAFEPAF
Host	Rabbit
Reactivity	Human
Form	Liquid
Purification	Antigen affinity purification
Isotype	IgG
Recommend Usage	Immunohistochemistry (1:200-1:500) The optimal working dilution should be determined by the end user.
Storage Buffer	In PBS, pH 7.2 (40% glycerol, 0.02% sodium azide)

Storage Instruction

Store at 4°C. For long term storage store at -20°C.
Aliquot to avoid repeated freezing and thawing.

Note

This product contains sodium azide: a POISONOUS AND HAZARDOUS SUBSTANCE which should be handled by trained staff only.

Applications

- Immunohistochemistry (Formalin/PFA-fixed paraffin-embedded sections)

Immunohistochemical staining of human cervix, uterine with ASCL4 polyclonal antibody (Cat # PAB22948) strong cytoplasmic positivity in glandular cells at 1:200-1:500 dilution.

Gene Info — ASCL4

Entrez GeneID[121549](#)**Protein Accession#**[Q6XD76](#)**Gene Name**

ASCL4

Gene Alias

HASH4, bHLHa44

Gene Description

achaete-scute complex homolog 4 (Drosophila)

Omim ID[609155](#)**Gene Ontology**[Hyperlink](#)**Gene Summary**

Basic helix-loop-helix transcription factors, such as ASCL4, are essential for the determination of cell fate and the development and differentiation of numerous tissues (Jonsson et al., 2004 [PubMed 15475265]).[supplied by OMIM]

Other Designations

achaete-scute complex-like 4|achaete-scute-like protein 4|class II bHLH protein ASCL4