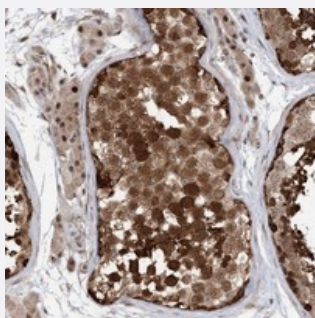


FAM162B polyclonal antibody

Catalog # PAB22947 Size 100 uL

Applications



Immunohistochemistry (Formalin/PFA-fixed paraffin-embedded sections)

Immunohistochemical staining of human testis with FAM162B polyclonal antibody (Cat # PAB22947) shows strong cytoplasmic and nuclear positivity in seminiferous duct cells.

Specification

Product Description	Rabbit polyclonal antibody raised against recombinant FAM162B.
Immunogen	Recombinant protein corresponding to amino acids of human FAM162B.
Sequence	HESLTSWNLAKKAKWREEAALAAQAKAK
Host	Rabbit
Reactivity	Human
Form	Liquid
Purification	Antigen affinity purification
Isotype	IgG
Recommend Usage	Immunohistochemistry (1:500-1:1000) The optimal working dilution should be determined by the end user.
Storage Buffer	In PBS, pH 7.2 (40% glycerol, 0.02% sodium azide)
Storage Instruction	Store at 4°C. For long term storage store at -20°C. Aliquot to avoid repeated freezing and thawing.

Note

This product contains sodium azide: a POISONOUS AND HAZARDOUS SUBSTANCE which should be handled by trained staff only.

Applications

- Immunohistochemistry (Formalin/PFA-fixed paraffin-embedded sections)

Immunohistochemical staining of human testis with FAM162B polyclonal antibody (Cat # PAB22947) shows strong cytoplasmic and nuclear positivity in seminiferous duct cells.

Gene Info — FAM162B

Entrez GeneID [221303](#)

Protein Accession# [Q5T6X4](#)

Gene Name FAM162B

Gene Alias C6orf189, bA86F4.2

Gene Description family with sequence similarity 162, member B

Gene Ontology [Hyperlink](#)

Gene Summary O

Other Designations OTTHUMP00000017074|hypothetical protein LOC221303

Disease

- [Tobacco Use Disorder](#)