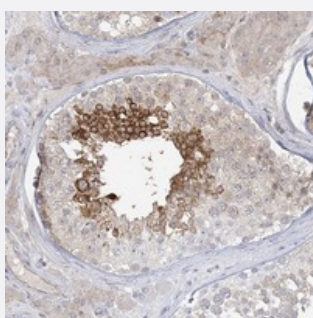


ADAMTS12 polyclonal antibody

Catalog # PAB22935 Size 100 uL

Applications



Immunohistochemistry (Formalin/PFA-fixed paraffin-embedded sections)

Immunohistochemical staining of human testis with ADAMTS12 polyclonal antibody (Cat # PAB22935) shows strong cytoplasmic positivity in subsets of seminiferous duct cells at 1:50-1:200 dilution.

Specification

Product Description	Rabbit polyclonal antibody raised against recombinant ADAMTS12.
Immunogen	Recombinant protein corresponding to amino acids of human ADAMTS12.
Sequence	SSDTGPTSEGLVATTTSGSGLSSSRNPITWPVTPFYNTLTGPEMEIHSGSGEEREQPEDKDES NPVIWTKIRVPGNDAPVESTEMPLAPLTPDLSRESWWPPFSTVMEGLLPQRPTTSETGTPRV EGMVTEKPANTLLPL
Host	Rabbit
Reactivity	Human
Form	Liquid
Purification	Antigen affinity purification
Isotype	IgG
Recommend Usage	Immunohistochemistry (1:50-1:200) The optimal working dilution should be determined by the end user.
Storage Buffer	In PBS, pH 7.2 (40% glycerol, 0.02% sodium azide)

Storage Instruction

Store at 4°C. For long term storage store at -20°C.
Aliquot to avoid repeated freezing and thawing.

Note

This product contains sodium azide: a POISONOUS AND HAZARDOUS SUBSTANCE which should be handled by trained staff only.

Applications

- Immunohistochemistry (Formalin/PFA-fixed paraffin-embedded sections)

Immunohistochemical staining of human testis with ADAMTS12 polyclonal antibody (Cat # PAB22935) shows strong cytoplasmic positivity in subsets of seminiferous duct cells at 1:50-1:200 dilution.

Gene Info — ADAMTS12

Entrez GeneID[81792](#)**Protein Accession#**[P58397](#)**Gene Name**

ADAMTS12

Gene Alias

PRO4389

Gene Description

ADAM metalloproteinase with thrombospondin type 1 motif, 12

Omim ID[606184](#)**Gene Ontology**[Hyperlink](#)**Gene Summary**

This gene encodes a member of the ADAMTS (a disintegrin and metalloproteinase with thrombospondin motifs) protein family. Members of the family share several distinct protein modules, including a propeptide region, a metalloproteinase domain, a disintegrin-like domain, and a thrombospondin type 1 (TS-1) motif. Individual members of this family differ in the number of C-terminal TS-1 motifs, and some have unique C-terminal domains. The enzyme encoded by this gene contains eight TS-1 motifs. It may play roles in pulmonary cells during fetal development or in tumor processes through its proteolytic activity or as a molecule potentially involved in regulation of cell adhesion. [provided by RefSeq]

Other Designations

a disintegrin-like and metalloprotease (reprolysin type) with thrombospondin type 1 motif, 12

Disease

- [Tobacco Use Disorder](#)