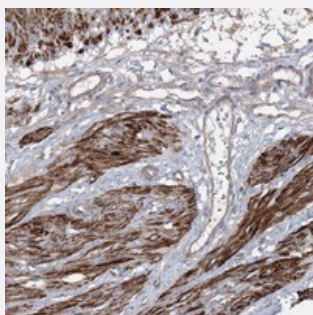


ZSWIM6 polyclonal antibody

Catalog # PAB22929 Size 100 uL

Applications



Immunohistochemistry (Formalin/PFA-fixed paraffin-embedded sections)

Immunohistochemical staining of human smooth muscle with ZSWIM6 polyclonal antibody (Cat # PAB22929) shows strong cytoplasmic positivity in smooth muscle cells.

Specification

Product Description	Rabbit polyclonal antibody raised against recombinant ZSWIM6.
Immunogen	Recombinant protein corresponding to amino acids of human ZSWIM6.
Sequence	DPVGTLFSSLMEACRIDDENLSGFSDFTENMGQCKSLEYQHLPAAHKFLEEGESYLTlaveval
Host	Rabbit
Reactivity	Human
Form	Liquid
Purification	Antigen affinity purification
Isotype	IgG
Recommend Usage	Immunohistochemistry (1:50-1:200) The optimal working dilution should be determined by the end user.
Storage Buffer	In PBS, pH 7.2 (40% glycerol, 0.02% sodium azide)
Storage Instruction	Store at 4°C. For long term storage store at -20°C. Aliquot to avoid repeated freezing and thawing.

Note

This product contains sodium azide: a POISONOUS AND HAZARDOUS SUBSTANCE which should be handled by trained staff only.

Applications

- Immunohistochemistry (Formalin/PFA-fixed paraffin-embedded sections)

Immunohistochemical staining of human smooth muscle with ZSWIM6 polyclonal antibody (Cat # PAB22929) shows strong cytoplasmic positivity in smooth muscle cells.

Gene Info — ZSWIM6

Entrez GeneID	57688
---------------	-----------------------

Protein Accession#	Q9HCJ5
--------------------	------------------------

Gene Name	ZSWIM6
-----------	--------

Gene Alias	DKFZp779P0344, KIAA1577
------------	-------------------------

Gene Description	zinc finger, SWIM-type containing 6
------------------	-------------------------------------

Gene Ontology	Hyperlink
---------------	---------------------------

Gene Summary	O
--------------	---

Other Designations	zinc finger, SWIM domain containing 6
--------------------	---------------------------------------