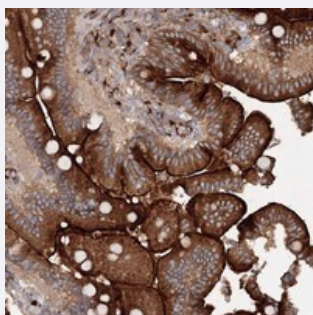


# SLC36A1 polyclonal antibody

Catalog # PAB22928      Size 100 uL

## Applications



### Immunohistochemistry (Formalin/PFA-fixed paraffin-embedded sections)

Immunohistochemical staining of human duodenum with SLC36A1 polyclonal antibody (Cat # PAB22928) shows strong cytoplasmic and luminal membranous positivity in glandular cells at 1:50-1:200 dilution.

## Specification

<b>Product Description</b>	Rabbit polyclonal antibody raised against recombinant SLC36A1.
<b>Immunogen</b>	Recombinant protein corresponding to amino acids of human SLC36A1.
<b>Sequence</b>	MSTQRLRNEDYHDYSSSTDVSPEESPSEGLNNLSSPGSYQRFGGQSNSTTWFTQT
<b>Host</b>	Rabbit
<b>Reactivity</b>	Human
<b>Form</b>	Liquid
<b>Purification</b>	Antigen affinity purification
<b>Isotype</b>	IgG
<b>Recommend Usage</b>	Immunohistochemistry (1:50-1:200) The optimal working dilution should be determined by the end user.
<b>Storage Buffer</b>	In PBS, pH 7.2 (40% glycerol, 0.02% sodium azide)
<b>Storage Instruction</b>	Store at 4°C. For long term storage store at -20°C. Aliquot to avoid repeated freezing and thawing.

**Note**

This product contains sodium azide: a POISONOUS AND HAZARDOUS SUBSTANCE which should be handled by trained staff only.

## Applications

- Immunohistochemistry (Formalin/PFA-fixed paraffin-embedded sections)

Immunohistochemical staining of human duodenum with SLC36A1 polyclonal antibody (Cat # PAB22928) shows strong cytoplasmic and luminal membranous positivity in glandular cells at 1:50-1:200 dilution.

## Gene Info — SLC36A1

**Entrez GeneID** [206358](#)

**Protein Accession#** [Q7Z2H8](#)

**Gene Name** SLC36A1

**Gene Alias** LYAAT1, PAT1, TRAMD3

**Gene Description** solute carrier family 36 (proton/amino acid symporter), member 1

**Omim ID** [606561](#)

**Gene Ontology** [Hyperlink](#)

**Gene Summary** This gene encodes a member of the eukaryote-specific amino acid/auxin permease (AAP) 1 transporter family. The encoded protein functions as a proton-dependent, small amino acid transporter. This gene is clustered with related family members on chromosome 5q33.1. [provided by RefSeq]

**Other Designations** lysosomal amino acid transporter 1|proton-coupled amino acid transporter|proton/amino acid transporter 1|solute carrier family 36 member 1