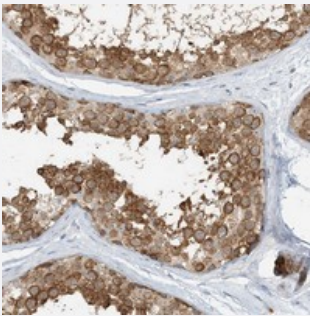


ARD1B polyclonal antibody

Catalog # PAB22924 Size 100 uL

Applications



Immunohistochemistry (Formalin/PFA-fixed paraffin-embedded sections)

Immunohistochemical staining of human testis with ARD1B polyclonal antibody (Cat # PAB22924) shows distinct cytoplasmic positivity in seminiferous duct cells at 1:500-1:1000 dilution.

Specification

Product Description	Rabbit polyclonal antibody raised against recombinant ARD1B.
Immunogen	Recombinant protein corresponding to amino acids of human ARD1B.
Sequence	DELRRQMDLKKGGYVVLGSRENQETQGSTLSDSEEACQQKNPATEESGSDSKEPKESVESTNV QDSSE
Host	Rabbit
Reactivity	Human
Form	Liquid
Purification	Antigen affinity purification
Isotype	IgG
Recommend Usage	Immunohistochemistry (1:500-1:1000) The optimal working dilution should be determined by the end user.
Storage Buffer	In PBS, pH 7.2 (40% glycerol, 0.02% sodium azide)

Storage Instruction

Store at 4°C. For long term storage store at -20°C.
Aliquot to avoid repeated freezing and thawing.

Note

This product contains sodium azide: a POISONOUS AND HAZARDOUS SUBSTANCE which should be handled by trained staff only.

Applications

- Immunohistochemistry (Formalin/PFA-fixed paraffin-embedded sections)

Immunohistochemical staining of human testis with ARD1B polyclonal antibody (Cat # PAB22924) shows distinct cytoplasmic positivity in seminiferous duct cells at 1:500-1:1000 dilution.

Gene Info — ARD1B

Entrez GeneID[84779](#)**Protein Accession#**[Q9BSU3](#)**Gene Name**

ARD1B

Gene Alias

ARD2, MGC10646, hARD2

Gene Description

ARD1 homolog B (S. cerevisiae)

Gene Ontology[Hyperlink](#)**Other Designations**

ARD1 homolog B protein|human arrest defective 2