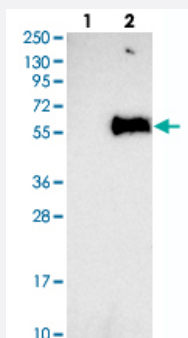


SERINC1 polyclonal antibody

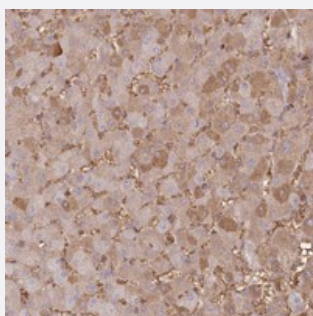
Catalog # PAB22903 Size 100 uL

Applications



Western Blot (Transfected lysate)

Western blot analysis of Lane 1: Negative control (vector only transfected HEK293T lysate), Lane 2: Over-expression Lysate (Co-expressed with a C-terminal myc-DDK tag (~3.1 kDa) in mammalian HEK293T cells) with SERINC1 polyclonal antibody (Cat # PAB22903).



Immunohistochemistry (Formalin/PFA-fixed paraffin-embedded sections)

Immunohistochemical staining of human liver with SERINC1 polyclonal antibody (Cat # PAB22903) shows moderate cytoplasmic positivity in hepatocytes.

Specification

| | |
|----------------------------|--|
| Product Description | Rabbit polyclonal antibody raised against recombinant SERINC1. |
| Immunogen | Recombinant protein corresponding to amino acids of human SERINC1. |
| Sequence | RTSNNSQVNLTLTDESTLIEDGGARSDGSLEDGDDVHRAVDNERDGVTY |
| Host | Rabbit |
| Reactivity | Human |
| Form | Liquid |
| Purification | Antigen affinity purification |

| | |
|---------------------|--|
| Isotype | IgG |
| Recommend Usage | Immunohistochemistry (1:200-1:500) Western Blot (1:250-1:500) The optimal working dilution should be determined by the end user. |
| Storage Buffer | In PBS, pH 7.2 (40% glycerol, 0.02% sodium azide) |
| Storage Instruction | Store at 4°C. For long term storage store at -20°C. Aliquot to avoid repeated freezing and thawing. |
| Note | This product contains sodium azide: a POISONOUS AND HAZARDOUS SUBSTANCE which should be handled by trained staff only. |

Applications

- Western Blot (Transfected lysate)

Western blot analysis of Lane 1: Negative control (vector only transfected HEK293T lysate), Lane 2: Over-expression Lysate (Co-expressed with a C-terminal myc-DDK tag (~3.1 kDa) in mammalian HEK293T cells) with SERINC1 polyclonal antibody (Cat # PAB22903).

- Immunohistochemistry (Formalin/PFA-fixed paraffin-embedded sections)

Immunohistochemical staining of human liver with SERINC1 polyclonal antibody (Cat # PAB22903) shows moderate cytoplasmic positivity in hepatocytes.

Gene Info — SERINC1

| | |
|--------------------|--|
| Entrez GeneID | 57515 |
| Protein Accession# | Q9NRX5 |
| Gene Name | SERINC1 |
| Gene Alias | KIAA1253, TDE1L, TDE2, TMS-2 |
| Gene Description | serine incorporator 1 |
| Gene Ontology | Hyperlink |
| Other Designations | OTTHUMP00000017112 OTTHUMP00000040348 tumor differentially expressed 2 |

Disease

- [Cleft Lip](#)
- [Cleft Palate](#)
- [Tooth Abnormalities](#)