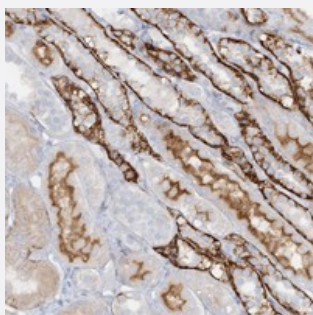


ATP11A polyclonal antibody

Catalog # PAB22886 Size 100 uL

Applications



Immunohistochemistry (Formalin/PFA-fixed paraffin-embedded sections)

Immunohistochemical staining of human kidney with ATP11A polyclonal antibody (Cat # PAB22886) shows strong cytoplasmic and membranous positivity in distal tubules.

Specification

Product Description	Rabbit polyclonal antibody raised against recombinant ATP11A.
Immunogen	Recombinant protein corresponding to amino acids of human ATP11A.
Sequence	TCYACKLFRRNTQLELTTKRIEEQSLHDVLFELSKTVLRHSGSLTRDNLGSLADMQDYGLIIDGA ALSLIMKPREDGSSGNRYELFLEICRSC
Host	Rabbit
Reactivity	Human
Form	Liquid
Purification	Antigen affinity purification
Isotype	IgG
Recommend Usage	Immunohistochemistry (1:50-1:200) The optimal working dilution should be determined by the end user.
Storage Buffer	In PBS, pH 7.2 (40% glycerol, 0.02% sodium azide)

Storage Instruction

Store at 4°C. For long term storage store at -20°C.
Aliquot to avoid repeated freezing and thawing.

Note

This product contains sodium azide: a POISONOUS AND HAZARDOUS SUBSTANCE which should be handled by trained staff only.

Applications

- Immunohistochemistry (Formalin/PFA-fixed paraffin-embedded sections)

Immunohistochemical staining of human kidney with ATP11A polyclonal antibody (Cat # PAB22886) shows strong cytoplasmic and membranous positivity in distal tubules.

Gene Info — ATP11A

Entrez GeneID[23250](#)**Protein Accession#**[P98196](#)**Gene Name**

ATP11A

Gene Alias

ATPIH, ATPIS

Gene Description

ATPase, class VI, type 11A

Omim ID[605868](#)**Gene Ontology**[Hyperlink](#)**Gene Summary**

The protein encoded by this gene is an integral membrane ATPase. The encoded protein is probably phosphorylated in its intermediate state and likely drives the transport of ions such as calcium across membranes. Two transcript variants encoding different isoforms have been found for this gene. [provided by RefSeq]

Other Designations

OTTHUMP00000018729|OTTHUMP00000040662|phospholipid-translocating ATPase|potential phospholipid-transporting ATPase IH

Disease

- [Tobacco Use Disorder](#)