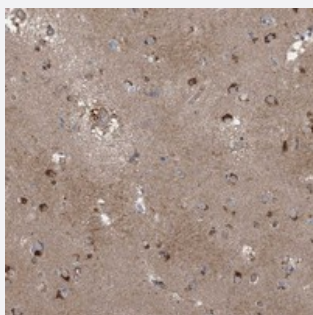


SFMBT2 polyclonal antibody

Catalog # PAB22875 Size 100 uL

Applications



Immunohistochemistry (Formalin/PFA-fixed paraffin-embedded sections)

Immunohistochemical staining of human lateral ventricle with SFMBT2 polyclonal antibody (Cat # PAB22875) shows strong cytoplasmic positivity in neuronal cells at 1:200-1:500 dilution.

Specification

Product Description	Rabbit polyclonal antibody raised against recombinant SFMBT2.
Immunogen	Recombinant protein corresponding to amino acids of human SFMBT2.
Sequence	DFWCDVVVADLHPVGWCTQNNKVLMPDPAIKEKYTDWTEFLIRDLTGSRTAPANLLEGPLRGKGP IDLITVGSLIELQDSQN
Host	Rabbit
Reactivity	Human
Form	Liquid
Purification	Antigen affinity purification
Isotype	IgG
Recommend Usage	Immunohistochemistry (1:200-1:500) The optimal working dilution should be determined by the end user.
Storage Buffer	In PBS, pH 7.2 (40% glycerol, 0.02% sodium azide)

Storage Instruction

Store at 4°C. For long term storage store at -20°C.
Aliquot to avoid repeated freezing and thawing.

Note

This product contains sodium azide: a POISONOUS AND HAZARDOUS SUBSTANCE which should be handled by trained staff only.

Applications

- Immunohistochemistry (Formalin/PFA-fixed paraffin-embedded sections)

Immunohistochemical staining of human lateral ventricle with SFMBT2 polyclonal antibody (Cat # PAB22875) shows strong cytoplasmic positivity in neuronal cells at 1:200-1:500 dilution.

Gene Info — SFMBT2

Entrez GeneID[57713](#)**Protein Accession#**[Q5VUG0](#)**Gene Name**

SFMBT2

Gene Alias

-

Gene Description

Scm-like with four mbt domains 2

Gene Ontology[Hyperlink](#)**Other Designations**

OTTHUMP00000019055|OTTHUMP00000044865|Scm-related gene containing four mbt domains 2