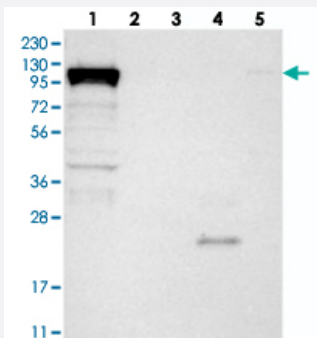


# DHX36 polyclonal antibody

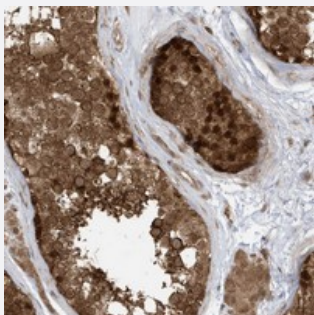
Catalog # PAB22871      Size 100 uL

## Applications



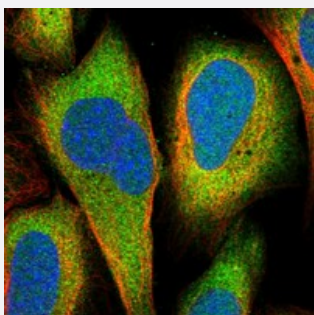
### Western Blot

Western blot analysis of Lane 1: RT-4, Lane 2: U-251 MG, Lane 3: Human Plasma, Lane 4: Liver, Lane 5: Tonsil with DHX36 polyclonal antibody (Cat # PAB22871) at 1:250-1:500 dilution.



### Immunohistochemistry (Formalin/PFA-fixed paraffin-embedded sections)

Immunohistochemical staining of human testis with DHX36 polyclonal antibody (Cat # PAB22871) shows strong nuclear and cytoplasmic positivity in cells of seminiferous ducts at 1:20-1:50 dilution.



### Immunofluorescence

Immunofluorescent staining of human cell line U-2 OS with DHX36 polyclonal antibody (Cat # PAB22871) at 1-4 ug/mL dilution shows positivity in cytoplasm.

## Specification

### Product Description

Rabbit polyclonal antibody raised against recombinant DHX36.

### Immunogen

Recombinant protein corresponding to amino acids of human DHX36.

Sequence	ERREEQIVQLLNSVQAKNDKESEAIQISWFAPEDHGYGTEVSTKNTPCSENKLDIQEKKLINQEKK MFRIRNRSYIDRDSEYLLQENEPDGT
Host	Rabbit
Reactivity	Human
Form	Liquid
Purification	Antigen affinity purification
Isotype	IgG
Recommend Usage	Immunohistochemistry (1:20-1:50) Western Blot (1:250-1:500) Immunofluorescence (1-4 ug/mL) The optimal working dilution should be determined by the end user.
Storage Buffer	In PBS, pH 7.2 (40% glycerol, 0.02% sodium azide)
Storage Instruction	Store at 4°C. For long term storage store at -20°C. Aliquot to avoid repeated freezing and thawing.
Note	This product contains sodium azide: a POISONOUS AND HAZARDOUS SUBSTANCE which should be handled by trained staff only.

## Applications

- Western Blot

Western blot analysis of Lane 1: RT-4, Lane 2: U-251 MG, Lane 3: Human Plasma, Lane 4: Liver, Lane 5: Tonsil with DHX36 polyclonal antibody (Cat # PAB22871) at 1:250-1:500 dilution.

- Immunohistochemistry (Formalin/PFA-fixed paraffin-embedded sections)

Immunohistochemical staining of human testis with DHX36 polyclonal antibody (Cat # PAB22871) shows strong nuclear and cytoplasmic positivity in cells of seminiferous ducts at 1:20-1:50 dilution.

- Immunofluorescence

Immunofluorescent staining of human cell line U-2 OS with DHX36 polyclonal antibody (Cat # PAB22871) at 1-4 ug/mL dilution shows positivity in cytoplasm.

## Gene Info — DHX36

Entrez GeneID [170506](#)

Protein Accession# [Q9H2U1](#)

Gene Name	DHX36
Gene Alias	DDX36, G4R1, KIAA1488, MLEL1, RHAU
Gene Description	DEAH (Asp-Glu-Ala-His) box polypeptide 36
Gene Ontology	<a href="#">Hyperlink</a>
Gene Summary	<p>This gene is a member of the DEAH-box family of RNA-dependent NTPases which are named after the conserved amino acid sequence Asp-Glu-Ala-His in motif II. The protein encoded by this gene has been shown to enhance the deadenylation and decay of mRNAs with 3'-UTR AU-rich elements (ARE-mRNA). The protein has also been shown to resolve into single strands the highly stable tetramolecular DNA configuration (G4) that can form spontaneously in guanine-rich regions of DNA. Alternative splicing results in multiple transcript variants encoding different isoforms. [provided by RefSeq]</p>
Other Designations	DEAD/H (Asp-Glu-Ala-Asp/His) box polypeptide 36 G4 resolvase-1 RNA helicase associated with AU-rich element

## Disease

- [Colorectal Neoplasms](#)
- [Genetic Predisposition to Disease](#)