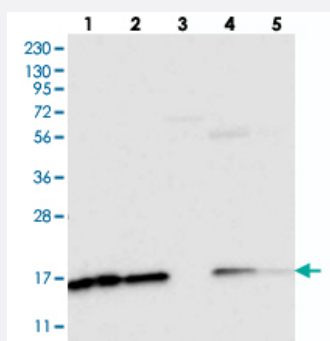


# NDUFAF3 polyclonal antibody

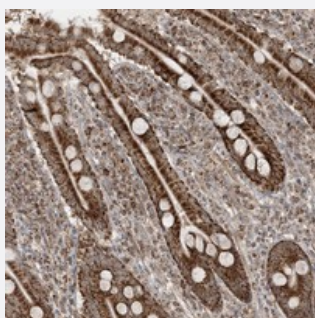
Catalog # PAB22870      Size 100 uL

## Applications



### Western Blot

Western blot analysis of Lane 1: RT-4, Lane 2: U-251 MG, Lane 3: Human Plasma, Lane 4: Liver, Lane 5: Tonsil with NDUFAF3 polyclonal antibody (Cat # PAB22870).



### Immunohistochemistry (Formalin/PFA-fixed paraffin-embedded sections)

Immunohistochemical staining of human duodenum with NDUFAF3 polyclonal antibody (Cat # PAB22870) shows strong granular cytoplasmic positivity in glandular cells.

## Specification

<b>Product Description</b>	Rabbit polyclonal antibody raised against recombinant NDUFAF3.
<b>Immunogen</b>	Recombinant protein corresponding to amino acids of human NDUFAF3.
<b>Sequence</b>	LLEPRIENVVGTGDRTERLQSQVLQAMRQRGIAVEVQDTPNACATFNFLCHEGRVTGAALIPPPG GTSLTSLGQAAQ
<b>Host</b>	Rabbit
<b>Reactivity</b>	Human
<b>Form</b>	Liquid

Purification	Antigen affinity purification
Isotype	IgG
Recommend Usage	Immunohistochemistry (1:50-1:200) Western Blot (1:250-1:500) The optimal working dilution should be determined by the end user.
Storage Buffer	In PBS, pH 7.2 (40% glycerol, 0.02% sodium azide)
Storage Instruction	Store at 4°C. For long term storage store at -20°C. Aliquot to avoid repeated freezing and thawing.
Note	This product contains sodium azide: a POISONOUS AND HAZARDOUS SUBSTANCE which should be handled by trained staff only.

## Applications

- Western Blot

Western blot analysis of Lane 1: RT-4, Lane 2: U-251 MG, Lane 3: Human Plasma, Lane 4: Liver, Lane 5: Tonsil with NDUFAF3 polyclonal antibody (Cat # PAB22870).

- Immunohistochemistry (Formalin/PFA-fixed paraffin-embedded sections)

Immunohistochemical staining of human duodenum with NDUFAF3 polyclonal antibody (Cat # PAB22870) shows strong granular cytoplasmic positivity in glandular cells.

## Gene Info — NDUFAF3

Entrez GeneID	<a href="#">25915</a>
Protein Accession#	<a href="#">Q9BU61</a>
Gene Name	NDUFAF3
Gene Alias	2P1, DKFZp564J0123, E3-3, MGC10527
Gene Description	chromosome 3 open reading frame 60
Gene Ontology	<a href="#">Hyperlink</a>
Gene Summary	This gene encodes a mitochondrial complex I assembly protein that interacts with complex I subunits. Mutations in this gene cause mitochondrial complex I deficiency, a fatal neonatal disorder of the oxidative phosphorylation system. Alternatively spliced transcript variants encoding different isoforms have been identified. [provided by RefSeq]
Other Designations	nuclear protein E3-3