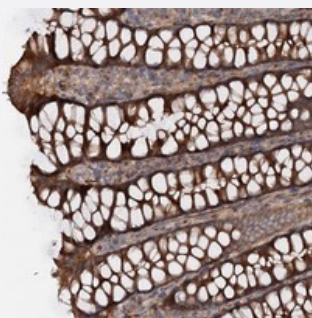


# GPR112 polyclonal antibody

Catalog # PAB22866      Size 100 uL

## Applications



### Immunohistochemistry (Formalin/PFA-fixed paraffin-embedded sections)

Immunohistochemical staining of human colon with GPR112 polyclonal antibody (Cat # PAB22866) strong cytoplasmic positivity in glandular cells at 1:50-1:200 dilution.

## Specification

Product Description	Rabbit polyclonal antibody raised against recombinant GPR112.
Immunogen	Recombinant protein corresponding to amino acids of human GPR112.
Sequence	INTGKSQWEKPKFKQCKLLQELPDKIVDLANITSDENAEDVAEHILNLINEPALGKEETKIVSKISD ISQCDEISMNLTHVMLQIINVVLEKQ
Host	Rabbit
Reactivity	Human
Form	Liquid
Purification	Antigen affinity purification
Isotype	IgG
Recommend Usage	Immunohistochemistry (1:50-1:200) The optimal working dilution should be determined by the end user.
Storage Buffer	In PBS, pH 7.2 (40% glycerol, 0.02% sodium azide)

**Storage Instruction**

Store at 4°C. For long term storage store at -20°C.  
Aliquot to avoid repeated freezing and thawing.

**Note**

This product contains sodium azide: a POISONOUS AND HAZARDOUS SUBSTANCE which should be handled by trained staff only.

## Applications

- Immunohistochemistry (Formalin/PFA-fixed paraffin-embedded sections)

Immunohistochemical staining of human colon with GPR112 polyclonal antibody (Cat # PAB22866) strong cytoplasmic positivity in glandular cells at 1:50-1:200 dilution.

## Gene Info — GPR112

**Entrez GeneID** [139378](#)

**Protein Accession#** [Q8IZF6](#)

**Gene Name** GPR112

**Gene Alias** DKFZp781E1948, PGR17, RP1-299I16

**Gene Description** G protein-coupled receptor 112

**Gene Ontology** [Hyperlink](#)

**Other Designations** G-protein coupled receptor 112|OTTHUMP00000183579