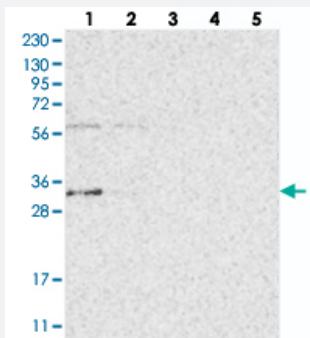


# ZFAND2B polyclonal antibody

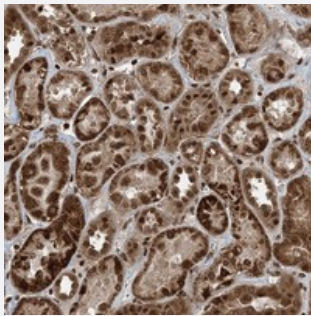
Catalog # PAB22857      Size 100 uL

## Applications



### Western Blot

Western blot analysis of Lane 1: RT-4, Lane 2: U-251 MG, Lane 3: Human Plasma, Lane 4: Liver, Lane 5: Tonsil with ZFAND2B polyclonal antibody (Cat # PAB22857) at 1:250-1:500 dilution.



### Immunohistochemistry (Formalin/PFA-fixed paraffin-embedded sections)

Immunohistochemical staining of human kidney with ZFAND2B polyclonal antibody (Cat # PAB22857) shows strong cytoplasmic and nuclear positivity in cells in tubules at 1:10-1:20 dilution.

## Specification

Product Description	Rabbit polyclonal antibody raised against recombinant ZFAND2B.
Immunogen	Recombinant protein corresponding to amino acids of human ZFAND2B.
Sequence	CPLCNVPVPVARGEPPDRAVGEHIDRCRSDPAQQKRKIFTNKCERAGCRQREMMKLTCCERCS RNFCIKH
Host	Rabbit
Reactivity	Human
Form	Liquid

Purification	Antigen affinity purification
Isotype	IgG
Recommend Usage	Immunohistochemistry (1:10-1:20) Western Blot (1:250-1:500) The optimal working dilution should be determined by the end user.
Storage Buffer	In PBS, pH 7.2 (40% glycerol, 0.02% sodium azide)
Storage Instruction	Store at 4°C. For long term storage store at -20°C. Aliquot to avoid repeated freezing and thawing.
Note	This product contains sodium azide: a POISONOUS AND HAZARDOUS SUBSTANCE which should be handled by trained staff only.

## Applications

- Western Blot

Western blot analysis of Lane 1: RT-4, Lane 2: U-251 MG, Lane 3: Human Plasma, Lane 4: Liver, Lane 5: Tonsil with ZFAND2B polyclonal antibody (Cat # PAB22857) at 1:250-1:500 dilution.

- Immunohistochemistry (Formalin/PFA-fixed paraffin-embedded sections)

Immunohistochemical staining of human kidney with ZFAND2B polyclonal antibody (Cat # PAB22857) shows strong cytoplasmic and nuclear positivity in cells in tubules at 1:10-1:20 dilution.

## Gene Info — ZFAND2B

Entrez GeneID	<a href="#">130617</a>
Protein Accession#	<a href="#">Q8WV99</a>
Gene Name	ZFAND2B
Gene Alias	-
Gene Description	zinc finger, AN1-type domain 2B
Gene Ontology	<a href="#">Hyperlink</a>
Gene Summary	O
Other Designations	zinc finger, AN1-type 2B