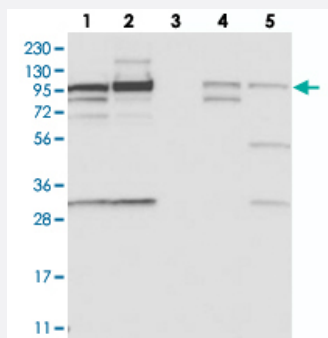


# SCARF2 polyclonal antibody

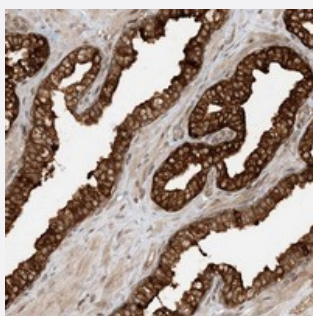
Catalog # PAB22849      Size 100 uL

## Applications



### Western Blot

Western blot analysis of Lane 1: RT-4, Lane 2: U-251 MG, Lane 3: Human Plasma, Lane 4: Liver, Lane 5: Tonsil with SCARF2 polyclonal antibody (Cat # PAB22849) at 1:250-1:500 dilution.



### Immunohistochemistry (Formalin/PFA-fixed paraffin-embedded sections)

Immunohistochemical staining of human prostate with SCARF2 polyclonal antibody (Cat # PAB22849) strong cytoplasmic positivity in glandular cells at 1:200-1:500 dilution.

## Specification

<b>Product Description</b>	Rabbit polyclonal antibody raised against recombinant SCARF2.
<b>Immunogen</b>	Recombinant protein corresponding to amino acids of human SCARF2.
<b>Sequence</b>	HHDLNTLNCSFLEPPSGLEQPSWSSRASFSFDTTDEGPVYCVPH EEAPAESRDPEVPTV P
<b>Host</b>	Rabbit
<b>Reactivity</b>	Human
<b>Form</b>	Liquid

Purification	Antigen affinity purification
Isotype	IgG
Recommend Usage	Immunohistochemistry (1:200-1:500) Western Blot (1:250-1:500) The optimal working dilution should be determined by the end user.
Storage Buffer	In PBS, pH 7.2 (40% glycerol, 0.02% sodium azide)
Storage Instruction	Store at 4°C. For long term storage store at -20°C. Aliquot to avoid repeated freezing and thawing.
Note	This product contains sodium azide: a POISONOUS AND HAZARDOUS SUBSTANCE which should be handled by trained staff only.

## Applications

- Western Blot

Western blot analysis of Lane 1: RT-4, Lane 2: U-251 MG, Lane 3: Human Plasma, Lane 4: Liver, Lane 5: Tonsil with SCARF2 polyclonal antibody (Cat # PAB22849) at 1:250-1:500 dilution.

- Immunohistochemistry (Formalin/PFA-fixed paraffin-embedded sections)

Immunohistochemical staining of human prostate with SCARF2 polyclonal antibody (Cat # PAB22849) strong cytoplasmic positivity in glandular cells at 1:200-1:500 dilution.

## Gene Info — SCARF2

Entrez GeneID	<a href="#">91179</a>
Protein Accession#	<a href="#">Q96GP6</a>
Gene Name	SCARF2
Gene Alias	NSR1, SREC-II, SREC2, SRECRP-1
Gene Description	scavenger receptor class F, member 2
Gene Ontology	<a href="#">Hyperlink</a>
Gene Summary	The protein encoded by this gene is similar to SCARF1/SREC-I, a scavenger receptor protein that mediates the binding and degradation of acetylated low density lipoprotein (Ac-LDL). This protein has only little activity of internalizing modified low density lipoproteins (LDL), but it can interact with SCARF1 through its extracellular domain. The association of this protein with SCARF1 is suppressed by the presence of scavenger ligands. Alternatively spliced transcript variants encoding distinct isoforms have been reported. [provided by RefSeq]

**Other Designations**

scavenger receptor expressed by endothelial cells 2

**Disease**

- [Kidney Failure](#)